

Cable ID	Summary	Test Limit	Length	Headroom	Date / Time
CAT6A-SLIM-5M-5	PASS	TIA Cat 6A Channel	5.7 m	5.8 dB (NEXT)	08/24/2019 09:34 PM
CAT6A-SLIM-5M-4	PASS	TIA Cat 6A Channel	5.7 m	6.1 dB (NEXT)	08/24/2019 09:33 PM
CAT6A-SLIM-5M-3	PASS	TIA Cat 6A Channel	5.7 m	7.2 dB (NEXT)	08/24/2019 09:33 PM
CAT6A-SLIM-5M-2	PASS	TIA Cat 6A Channel	5.7 m	5.6 dB (NEXT)	08/24/2019 09:32 PM
CAT6A-SLIM-5M-1	PASS	TIA Cat 6A Channel	5.7 m	6.0 dB (NEXT)	08/24/2019 09:32 PM
CAT6A-SLIM-3M-5	PASS	TIA Cat 6A Channel	3.5 m	8.8 dB (NEXT)	08/24/2019 09:31 PM
CAT6A-SLIM-3M-4	PASS	TIA Cat 6A Channel	3.5 m	8.8 dB (NEXT)	08/24/2019 09:31 PM
CAT6A-SLIM-3M-3	PASS	TIA Cat 6A Channel	3.5 m	8.1 dB (NEXT)	08/24/2019 09:30 PM
CAT6A-SLIM-3M-2	PASS	TIA Cat 6A Channel	3.5 m	6.6 dB (NEXT)	08/24/2019 09:30 PM
CAT6A-SLIM-3M-1	PASS	TIA Cat 6A Channel	3.5 m	9.9 dB (NEXT)	08/24/2019 09:29 PM
CAT6A-SLIM-2M-5	PASS	TIA Cat 6A Channel	2.5 m	10.5 dB (NEXT)	08/24/2019 09:29 PM
CAT6A-SLIM-2M-4	PASS	TIA Cat 6A Channel	2.5 m	10.3 dB (NEXT)	08/24/2019 09:28 PM
CAT6A-SLIM-2M-3	PASS	TIA Cat 6A Channel	2.5 m	9.4 dB (NEXT)	08/24/2019 09:28 PM
CAT6A-SLIM-2M-2	PASS	TIA Cat 6A Channel	2.5 m	8.0 dB (NEXT)	08/24/2019 09:27 PM
CAT6A-SLIM-2M-1	PASS	TIA Cat 6A Channel	2.5 m	9.8 dB (NEXT)	08/24/2019 09:27 PM
CAT6A-SLIM-1.5M-6	PASS	TIA Cat 6A Channel	1.8 m	11.8 dB (NEXT)	08/24/2019 09:26 PM
CAT6A-SLIM-1.5M-5	PASS	TIA Cat 6A Channel	1.8 m	12.6 dB (NEXT)	08/24/2019 09:26 PM
CAT6A-SLIM-1.5M-4	PASS	TIA Cat 6A Channel	1.8 m	11.3 dB (NEXT)	08/24/2019 09:26 PM
CAT6A-SLIM-1.5M-3	PASS	TIA Cat 6A Channel	1.8 m	9.0 dB (NEXT)	08/24/2019 09:24 PM
CAT6A-SLIM-1.5M-2	PASS	TIA Cat 6A Channel	1.8 m	14.0 dB (NEXT)	08/24/2019 09:24 PM
CAT6A-SLIM-1.5M-1	PASS	TIA Cat 6A Channel	1.8 m	13.2 dB (NEXT)	08/24/2019 09:23 PM
CAT6A-SLIM-1M-5	PASS	TIA Cat 6A Channel	1.2 m	15.7 dB (NEXT)	08/24/2019 09:21 PM
CAT6A-SLIM-1M-4	PASS	TIA Cat 6A Channel	1.2 m	15.4 dB (NEXT)	08/24/2019 09:20 PM
CAT6A-SLIM-1M-3	PASS	TIA Cat 6A Channel	1.2 m	15.9 dB (NEXT)	08/24/2019 09:20 PM
CAT6A-SLIM-1M-2	PASS	TIA Cat 6A Channel	1.2 m	11.2 dB (NEXT)	08/24/2019 09:19 PM
CAT6A-SLIM-1M-1	PASS	TIA Cat 6A Channel	1.2 m	14.6 dB (NEXT)	08/24/2019 09:19 PM
CAT6A-SLIM-0.5M-5	PASS	TIA Cat 6A Channel	0.6 m	15.2 dB (NEXT)	08/24/2019 09:18 PM
CAT6A-SLIM-0.5M-4	PASS	TIA Cat 6A Channel	0.6 m	15.6 dB (NEXT)	08/24/2019 09:18 PM
CAT6A-SLIM-0.5M-3	PASS	TIA Cat 6A Channel	0.6 m	17.2 dB (NEXT)	08/24/2019 09:17 PM
CAT6A-SLIM-0.5M-2	PASS	TIA Cat 6A Channel	0.6 m	15.1 dB (NEXT)	08/24/2019 09:17 PM
CAT6A-SLIM-0.5M-1	PASS	TIA Cat 6A Channel	0.6 m	15.9 dB (NEXT)	08/24/2019 09:16 PM

Total Length:	78.3 m
Number of Reports:	31
Number of Passing Reports:	31
Number of Failing Reports:	0
Number of Warning Reports:	0
Documentation Only:	0



Cable ID: CAT6A-SLIM-5M-5

Date / Time: 08/24/2019 09:34:08 PM

Headroom 5.8 dB (NEXT 12-36)

Test Limit: TIA Cat 6A Channel

Cable Type: Cat 6A U/UTP

NVP: 68.2%

Operator: KINGDATA

Software Version: V6.1 Build 3

Limits Version: V7.1

Calibration Start Date:

Main (Module): 05/11/2018

Remote (Module): 05/11/2018

Test Summary: PASS

Model: DSX-8000

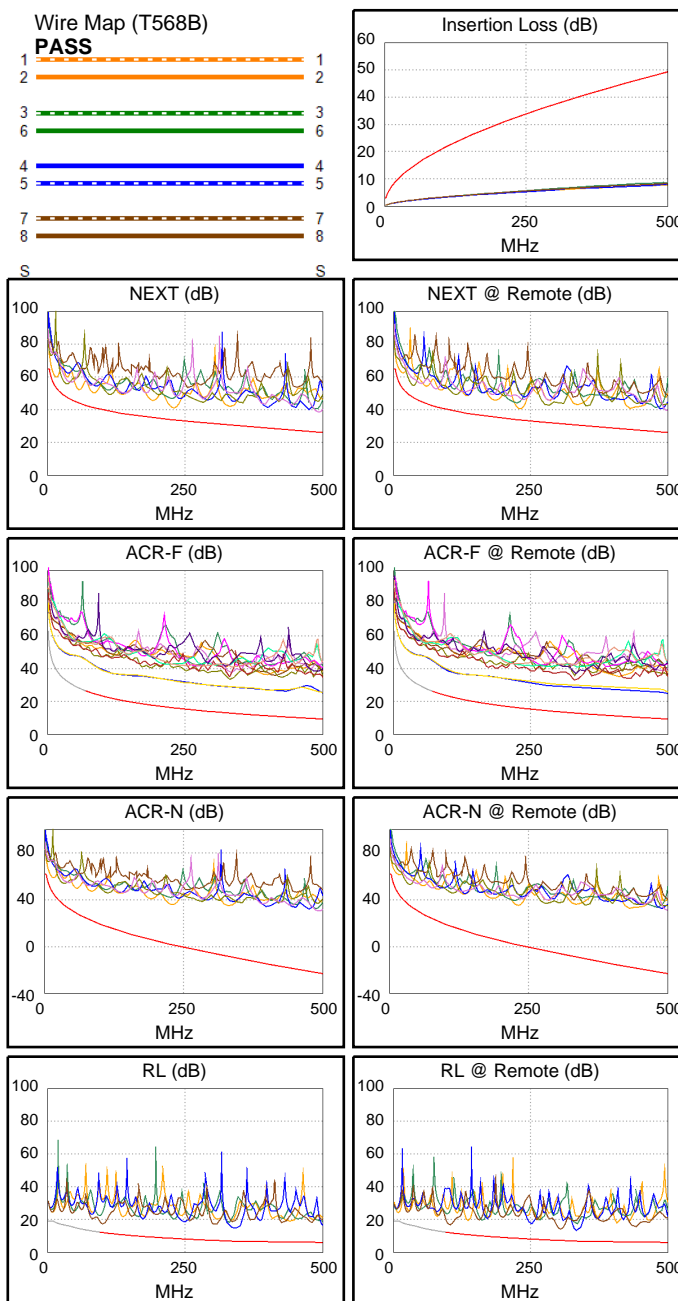
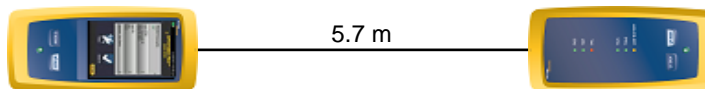
Main S/N: 1747425

Remote S/N: 1747424

Main Adapter: DSX-CHA804

Remote Adapter: DSX-CHA804

Length (m), Limit 100.0	[Pair 12]	5.7
Prop. Delay (ns), Limit 555	[Pair 36]	29
Delay Skew (ns), Limit 50	[Pair 36]	1
Resistance (ohms)	[Pair 78]	6.48
Insertion Loss Margin (dB)	[Pair 36]	40.7
Frequency (MHz)	[Pair 36]	500.0
Limit (dB)	[Pair 36]	49.3



Worst Case Margin Worst Case Value

PASS	MAIN	SR	MAIN	SR
Worst Pair	12-36	12-36	45-78	45-78
NEXT (dB)	5.8	6.8	12.4	13.5
Freq. (MHz)	11.4	229.5	494.0	500.0
Limit (dB)	55.7	33.8	26.2	26.1
Worst Pair	12	12	45	78
PS NEXT (dB)	8.0	8.1	13.2	13.6
Freq. (MHz)	11.4	231.0	491.0	496.0
Limit (dB)	53.1	30.8	23.4	23.3

PASS	MAIN	SR	MAIN	SR
Worst Pair	12-78	12-78	12-78	12-78
ACR-F (dB)	14.4	14.5	15.9	15.7
Freq. (MHz)	414.0	305.0	500.0	500.0
Limit (dB)	10.9	13.6	9.3	9.3
Worst Pair	78	78	78	78
PS ACR-F (dB)	17.2	17.3	18.8	18.5
Freq. (MHz)	320.0	305.0	499.0	500.0
Limit (dB)	10.2	10.6	6.3	6.3

N/A	MAIN	SR	MAIN	SR
Worst Pair	12-36	12-36	45-78	45-78
ACR-N (dB)	11.5	11.7	53.1	54.5
Freq. (MHz)	9.4	3.9	494.0	500.0
Limit (dB)	50.8	59.2	-22.7	-23.2
Worst Pair	36	36	45	78
PS ACR-N (dB)	12.3	11.5	54.2	54.5
Freq. (MHz)	3.3	3.3	491.0	496.0
Limit (dB)	58.2	58.2	-25.4	-25.8

PASS	MAIN	SR	MAIN	SR
Worst Pair	78	78	45	45
RL (dB)	5.3	4.8	8.1	6.3
Freq. (MHz)	101.0	103.0	343.0	334.0
Limit (dB)	12.0	11.9	6.6	6.8

Compliant Network Standards:

10BASE-T	100BASE-TX	100BASE-T4
1000BASE-T	2.5GBASE-T	5GBASE-T
10GBASE-T	ATM-25	ATM-51
ATM-155	100VG-AnyLan	TR-4
TR-16 Active	TR-16 Passive	



Cable ID: CAT6A-SLIM-5M-4

Date / Time: 08/24/2019 09:33:48 PM

Headroom 6.1 dB (NEXT 36-78)

Test Limit: TIA Cat 6A Channel

Cable Type: Cat 6A U/UTP

NVP: 68.2%

Operator: KINGDATA

Software Version: V6.1 Build 3

Limits Version: V7.1

Calibration Start Date:

Main (Module): 05/11/2018

Remote (Module): 05/11/2018

Test Summary: PASS

Model: DSX-8000

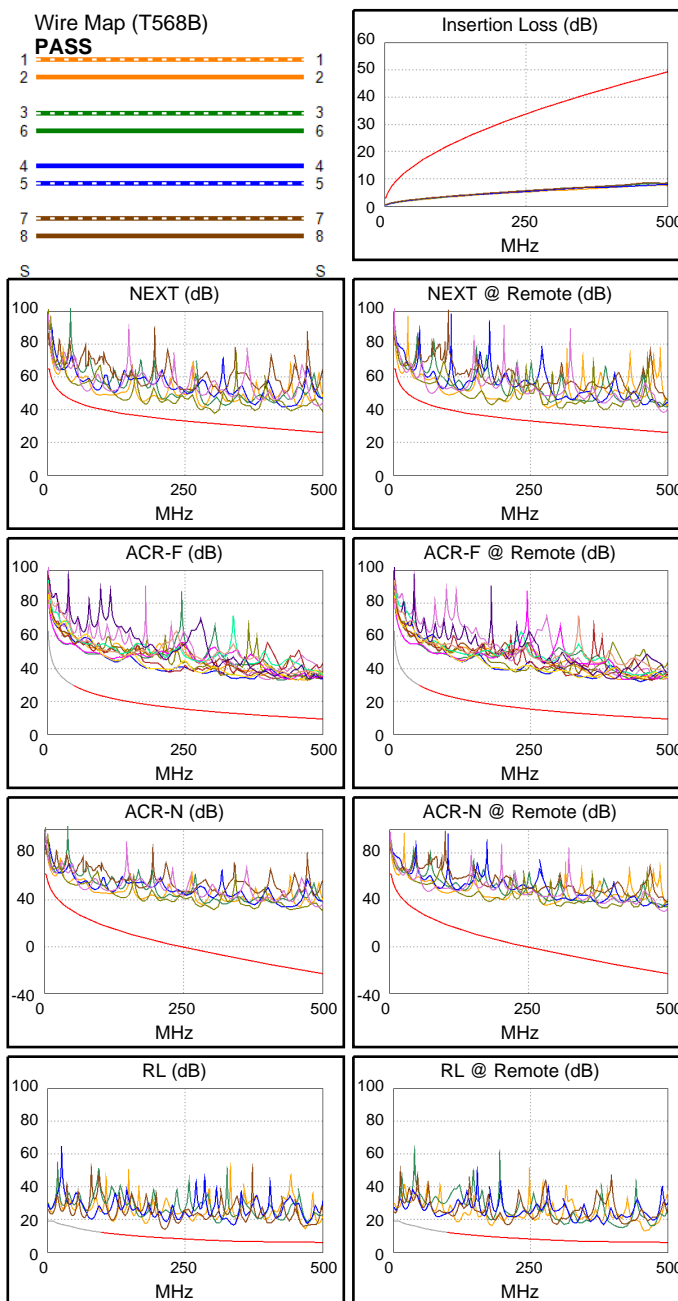
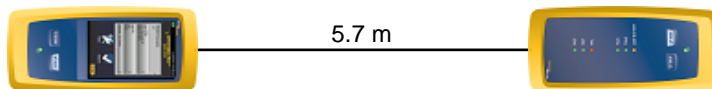
Main S/N: 1747425

Remote S/N: 1747424

Main Adapter: DSX-CHA804

Remote Adapter: DSX-CHA804

Length (m), Limit 100.0	[Pair 12]	5.7
Prop. Delay (ns), Limit 555	[Pair 36]	28
Delay Skew (ns), Limit 50	[Pair 12]	0
Resistance (ohms)	[Pair 78]	11.81
Insertion Loss Margin (dB)	[Pair 78]	38.9
Frequency (MHz)	[Pair 78]	469.0
Limit (dB)	[Pair 78]	47.6



Worst Case Margin Worst Case Value

PASS	MAIN	SR	MAIN	SR
Worst Pair	36-78	45-78	36-78	45-78
NEXT (dB)	6.1	7.3	6.1	12.1
Freq. (MHz)	305.0	68.0	305.0	492.0
Limit (dB)	31.6	42.8	31.6	26.3
Worst Pair	36	36	78	78
PS NEXT (dB)	8.3	8.5	12.4	12.3
Freq. (MHz)	175.0	13.3	446.0	489.0
Limit (dB)	32.9	52.0	24.5	23.5

PASS	MAIN	SR	MAIN	SR
Worst Pair	12-45	45-12	12-45	12-78
ACR-F (dB)	20.5	20.7	22.2	21.9
Freq. (MHz)	21.1	21.1	424.0	451.0
Limit (dB)	36.8	36.8	10.7	10.2
Worst Pair	12	12	12	12
PS ACR-F (dB)	21.5	22.1	22.2	22.6
Freq. (MHz)	1.4	19.3	449.0	463.0
Limit (dB)	57.5	34.6	7.2	6.9

N/A	MAIN	SR	MAIN	SR
Worst Pair	12-36	12-36	36-78	45-78
ACR-N (dB)	15.8	14.0	53.6	52.7
Freq. (MHz)	15.0	10.8	500.0	492.0
Limit (dB)	45.8	49.4	-23.2	-22.6
Worst Pair	36	36	78	78
PS ACR-N (dB)	16.3	14.5	50.6	52.6
Freq. (MHz)	13.5	10.6	446.0	489.0
Limit (dB)	44.3	46.9	-21.8	-25.2

PASS	MAIN	SR	MAIN	SR
Worst Pair	78	12	78	12
RL (dB)	5.2	6.6	5.2	6.6
Freq. (MHz)	213.0	460.0	213.0	460.0
Limit (dB)	8.7	6.0	8.7	6.0

Compliant Network Standards:

10BASE-T	100BASE-TX	100BASE-T4
1000BASE-T	2.5GBASE-T	5GBASE-T
10GBASE-T	ATM-25	ATM-51
ATM-155	100VG-AnyLan	TR-4
TR-16 Active	TR-16 Passive	



Cable ID: CAT6A-SLIM-5M-3

Date / Time: 08/24/2019 09:33:19 PM

Headroom 7.2 dB (NEXT 36-78)

Test Limit: TIA Cat 6A Channel

Cable Type: Cat 6A U/UTP

NVP: 68.2%

Operator: KINGDATA

Software Version: V6.1 Build 3

Limits Version: V7.1

Calibration Start Date:

Main (Module): 05/11/2018

Remote (Module): 05/11/2018

Test Summary: PASS

Model: DSX-8000

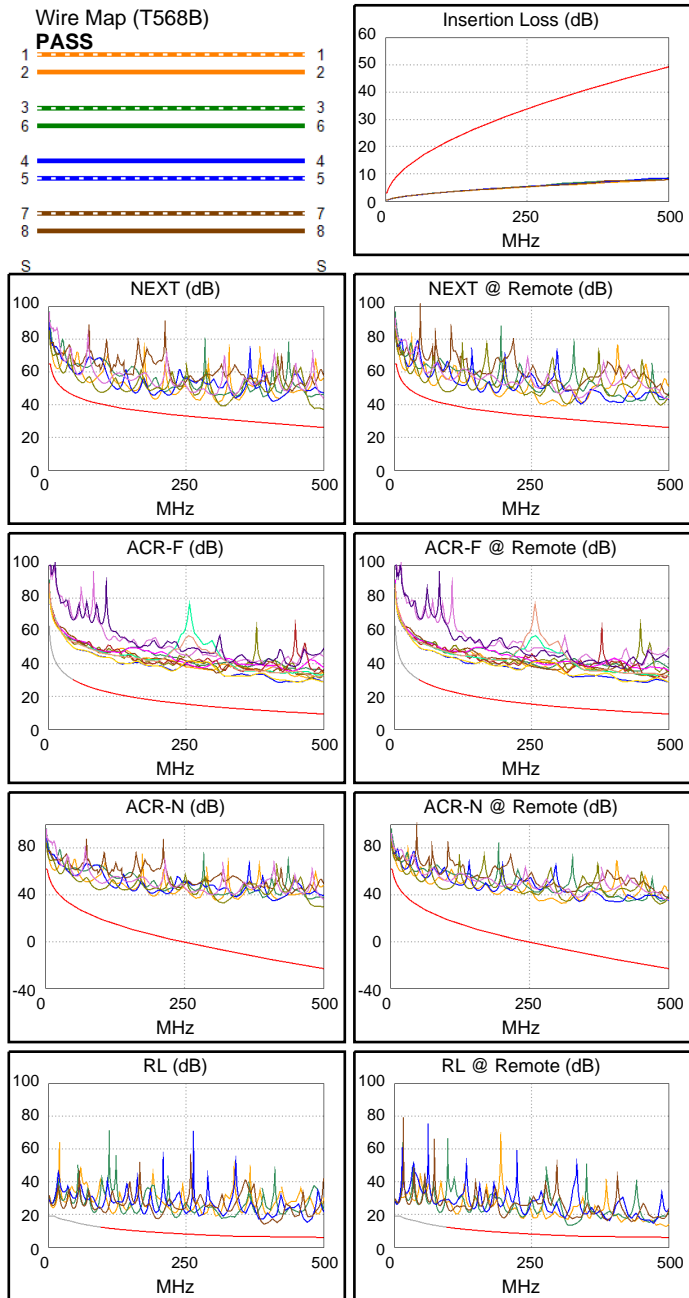
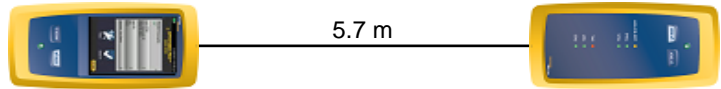
Main S/N: 1747425

Remote S/N: 1747424

Main Adapter: DSX-CHA804

Remote Adapter: DSX-CHA804

Length (m), Limit 100.0	[Pair 12]	5.7
Prop. Delay (ns), Limit 555	[Pair 36]	28
Delay Skew (ns), Limit 50	[Pair 12]	0
Resistance (ohms)	[Pair 45]	6.95
Insertion Loss Margin (dB)	[Pair 45]	39.5
Frequency (MHz)	[Pair 45]	479.0
Limit (dB)	[Pair 45]	48.2



Worst Case Margin Worst Case Value

PASS	MAIN	SR	MAIN	SR
Worst Pair	36-78	12-36	36-78	12-36
NEXT (dB)	7.2	7.3	11.1	7.4
Freq. (MHz)	95.5	307.0	500.0	309.0
Limit (dB)	40.3	31.6	26.1	31.5
Worst Pair	36	36	78	36
PS NEXT (dB)	9.1	8.1	12.8	8.1
Freq. (MHz)	316.0	313.0	500.0	313.0
Limit (dB)	28.4	28.4	23.2	28.4

PASS	MAIN	SR	MAIN	SR
Worst Pair	12-78	12-78	12-78	12-78
ACR-F (dB)	17.7	18.0	17.8	18.1
Freq. (MHz)	417.0	452.0	422.0	455.0
Limit (dB)	10.9	10.2	10.8	10.1
Worst Pair	78	78	12	78
PS ACR-F (dB)	19.2	19.9	19.6	19.9
Freq. (MHz)	417.0	452.0	452.0	452.0
Limit (dB)	7.9	7.2	7.2	7.2

N/A	MAIN	SR	MAIN	SR
Worst Pair	12-36	12-36	36-78	36-78
ACR-N (dB)	14.1	15.8	52.6	53.9
Freq. (MHz)	9.8	15.1	500.0	485.0
Limit (dB)	50.4	45.7	-23.2	-22.0
Worst Pair	36	36	78	36
PS ACR-N (dB)	14.1	15.7	54.3	39.8
Freq. (MHz)	3.5	3.5	500.0	313.0
Limit (dB)	57.6	57.6	-26.1	-9.8

PASS	MAIN	SR	MAIN	SR
Worst Pair	78	36	78	12
RL (dB)	7.7	6.1	7.8	6.8
Freq. (MHz)	393.0	320.0	394.0	495.0
Limit (dB)	6.1	6.9	6.0	6.0

Compliant Network Standards:
 10BASE-T 100BASE-TX 100BASE-T4
 1000BASE-T 2.5GBASE-T 5GBASE-T
 10GBASE-T ATM-25 ATM-51
 ATM-155 100VG-AnyLan TR-4
 TR-16 Active TR-16 Passive



Cable ID: CAT6A-SLIM-5M-2

Date / Time: 08/24/2019 09:32:45 PM

Headroom 5.6 dB (NEXT 12-36)

Test Limit: TIA Cat 6A Channel

Cable Type: Cat 6A U/UTP

NVP: 68.2%

Operator: KINGDATA

Software Version: V6.1 Build 3

Limits Version: V7.1

Calibration Start Date:

Main (Module): 05/11/2018

Remote (Module): 05/11/2018

Test Summary: PASS

Model: DSX-8000

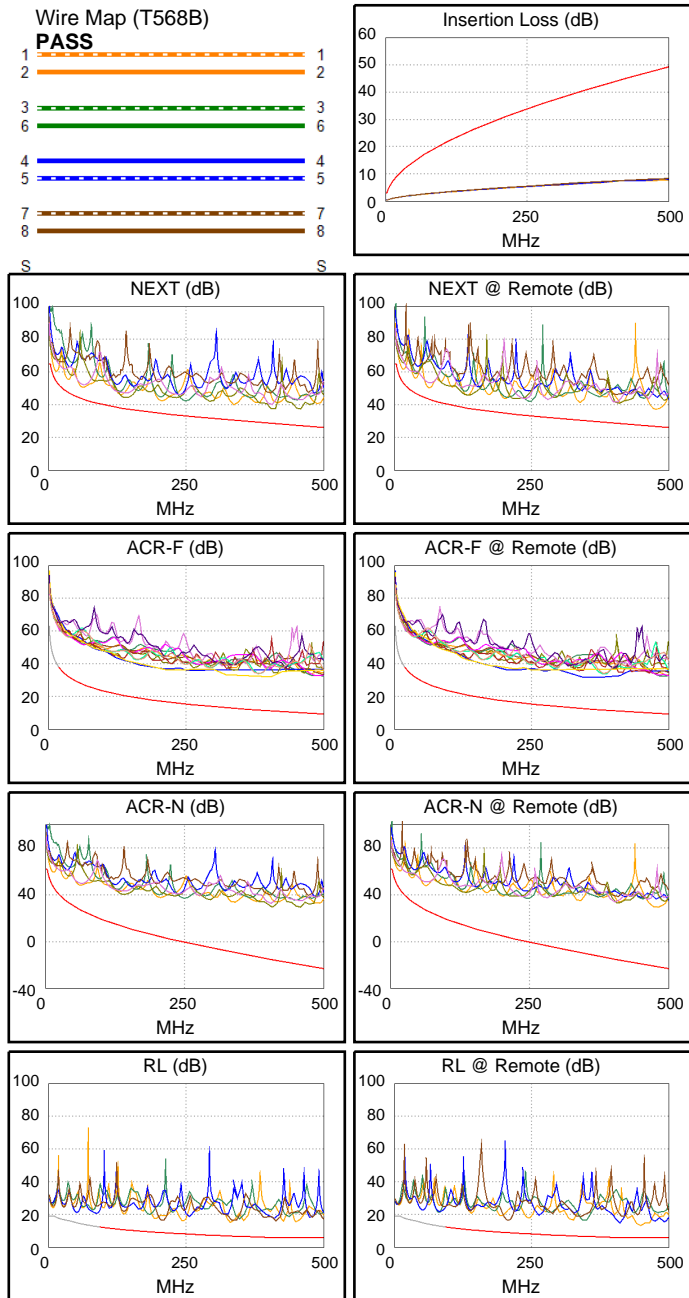
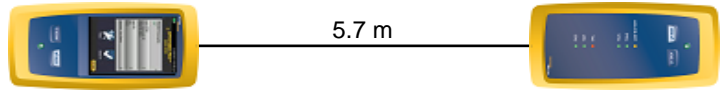
Main S/N: 1747425

Remote S/N: 1747424

Main Adapter: DSX-CHA804

Remote Adapter: DSX-CHA804

Length (m), Limit 100.0	[Pair 12]	5.7
Prop. Delay (ns), Limit 555	[Pair 36]	29
Delay Skew (ns), Limit 50	[Pair 36]	1
Resistance (ohms)	[Pair 36]	6.84
Insertion Loss Margin (dB)	[Pair 36]	40.9
Frequency (MHz)	[Pair 36]	496.0
Limit (dB)	[Pair 36]	49.1



Worst Case Margin Worst Case Value

PASS	MAIN	SR	MAIN	SR
Worst Pair	12-36	12-36	36-78	12-36
NEXT (dB)	5.6	7.0	8.4	10.5
Freq. (MHz)	11.6	62.5	409.0	479.0
Limit (dB)	55.5	43.4	28.5	26.6
Worst Pair	36	36	78	12
PS NEXT (dB)	7.0	7.8	9.7	12.4
Freq. (MHz)	11.6	130.5	407.0	479.0
Limit (dB)	52.9	35.1	25.6	23.7

PASS	MAIN	SR	MAIN	SR
Worst Pair	78-12	12-78	12-78	12-78
ACR-F (dB)	19.5	19.2	20.8	19.3
Freq. (MHz)	351.0	351.0	414.0	358.0
Limit (dB)	12.4	12.4	10.9	12.2
Worst Pair	78	78	12	12
PS ACR-F (dB)	21.1	20.9	22.9	22.5
Freq. (MHz)	382.0	330.0	498.0	476.0
Limit (dB)	8.6	9.9	6.3	6.7

N/A	MAIN	SR	MAIN	SR
Worst Pair	12-36	12-36	36-78	12-36
ACR-N (dB)	11.3	14.0	49.1	50.8
Freq. (MHz)	9.8	10.6	457.0	479.0
Limit (dB)	50.4	49.5	-19.8	-21.6
Worst Pair	36	36	78	12
PS ACR-N (dB)	12.5	14.3	46.4	52.9
Freq. (MHz)	9.1	10.3	407.0	479.0
Limit (dB)	48.5	47.3	-18.5	-24.4

PASS	MAIN	SR	MAIN	SR
Worst Pair	78	12	12	12
RL (dB)	7.4	7.1	8.2	7.1
Freq. (MHz)	206.5	448.0	332.0	448.0
Limit (dB)	8.9	6.0	6.8	6.0

Compliant Network Standards:
 10BASE-T 100BASE-TX 100BASE-T4
 1000BASE-T 2.5GBASE-T 5GBASE-T
 10GBASE-T ATM-25 ATM-51
 ATM-155 100VG-AnyLan TR-4
 TR-16 Active TR-16 Passive



Cable ID: CAT6A-SLIM-5M-1

Date / Time: 08/24/2019 09:32:14 PM

Headroom 6.0 dB (NEXT 36-78)

Test Limit: TIA Cat 6A Channel

Cable Type: Cat 6A U/UTP

NVP: 68.2%

Operator: KINGDATA

Software Version: V6.1 Build 3

Limits Version: V7.1

Calibration Start Date:

Main (Module): 05/11/2018

Remote (Module): 05/11/2018

Test Summary: PASS

Model: DSX-8000

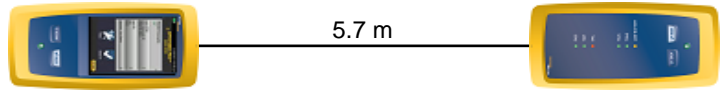
Main S/N: 1747425

Remote S/N: 1747424

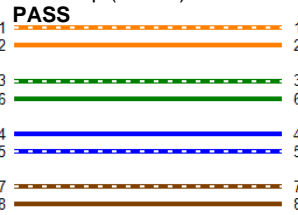
Main Adapter: DSX-CHA804

Remote Adapter: DSX-CHA804

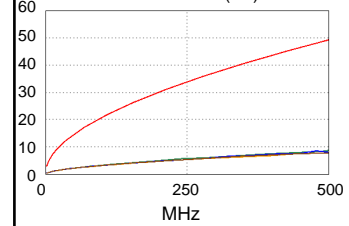
Length (m), Limit 100.0	[Pair 12]	5.7
Prop. Delay (ns), Limit 555	[Pair 36]	29
Delay Skew (ns), Limit 50	[Pair 36]	1
Resistance (ohms)	[Pair 45]	7.48
Insertion Loss Margin (dB)	[Pair 36]	40.7
Frequency (MHz)	[Pair 36]	500.0
Limit (dB)	[Pair 36]	49.3



Wire Map (T568B)

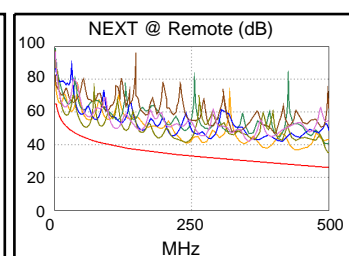
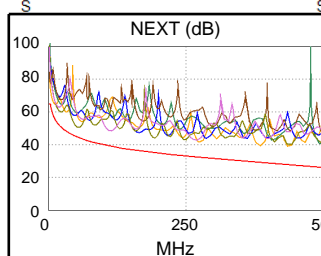


Insertion Loss (dB)

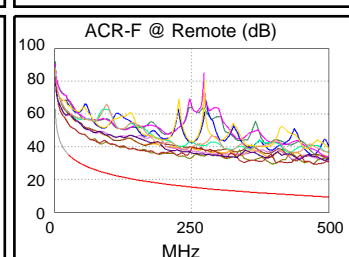
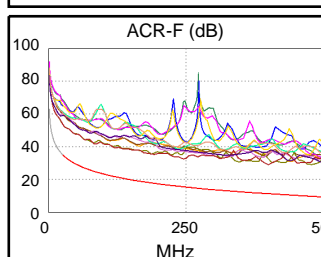


Worst Case Margin Worst Case Value

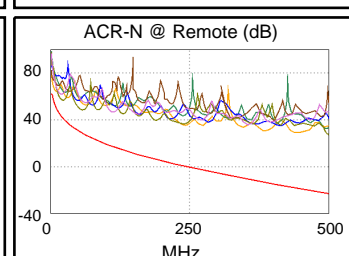
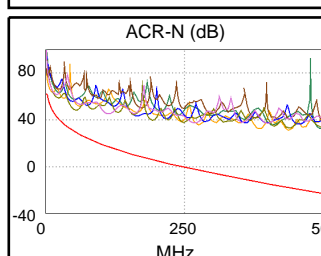
PASS	MAIN	SR	MAIN	SR
Worst Pair	36-78	36-78	12-36	36-78
NEXT (dB)	6.0	6.6	11.1	8.9
Freq. (MHz)	53.0	56.0	438.0	500.0
Limit (dB)	44.6	44.2	27.7	26.1
Worst Pair	78	36	36	36
PS NEXT (dB)	7.6	7.7	11.2	11.2
Freq. (MHz)	54.0	240.0	438.0	500.0
Limit (dB)	41.7	30.5	24.8	23.2



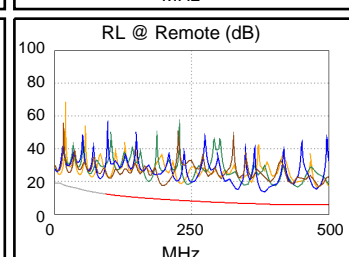
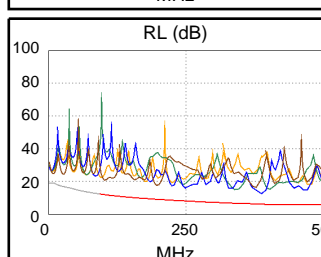
PASS	MAIN	SR	MAIN	SR
Worst Pair	45-36	36-45	36-45	45-36
ACR-F (dB)	16.9	16.9	19.1	19.4
Freq. (MHz)	84.0	84.0	475.0	475.0
Limit (dB)	24.8	24.8	9.7	9.7
Worst Pair	36	36	36	36
PS ACR-F (dB)	18.3	18.5	20.6	20.5
Freq. (MHz)	245.5	66.0	500.0	489.0
Limit (dB)	12.5	23.9	6.3	6.5



N/A	MAIN	SR	MAIN	SR
Worst Pair	12-36	12-36	12-36	36-78
ACR-N (dB)	12.4	10.7	49.2	50.4
Freq. (MHz)	3.4	3.0	439.0	500.0
Limit (dB)	60.4	61.4	-18.3	-23.2
Worst Pair	36	36	36	36
PS ACR-N (dB)	13.4	12.0	49.3	51.9
Freq. (MHz)	3.4	3.5	439.0	500.0
Limit (dB)	57.9	57.6	-21.2	-26.1



PASS	MAIN	SR	MAIN	SR
Worst Pair	45	45	45	45
RL (dB)	6.4	7.3	6.4	7.3
Freq. (MHz)	388.0	381.0	388.0	381.0
Limit (dB)	6.1	6.2	6.1	6.2



Compliant Network Standards:

10BASE-T	100BASE-TX	100BASE-T4
1000BASE-T	2.5GBASE-T	5GBASE-T
10GBASE-T	ATM-25	ATM-51
ATM-155	100VG-AnyLan	TR-4
TR-16 Active	TR-16 Passive	



Cable ID: CAT6A-SLIM-3M-5

Date / Time: 08/24/2019 09:31:39 PM

Headroom 8.8 dB (NEXT 12-36)

Test Limit: TIA Cat 6A Channel

Cable Type: Cat 6A U/UTP

NVP: 68.2%

Operator: KINGDATA

Software Version: V6.1 Build 3

Limits Version: V7.1

Calibration Start Date:

Main (Module): 05/11/2018

Remote (Module): 05/11/2018

Test Summary: PASS

Model: DSX-8000

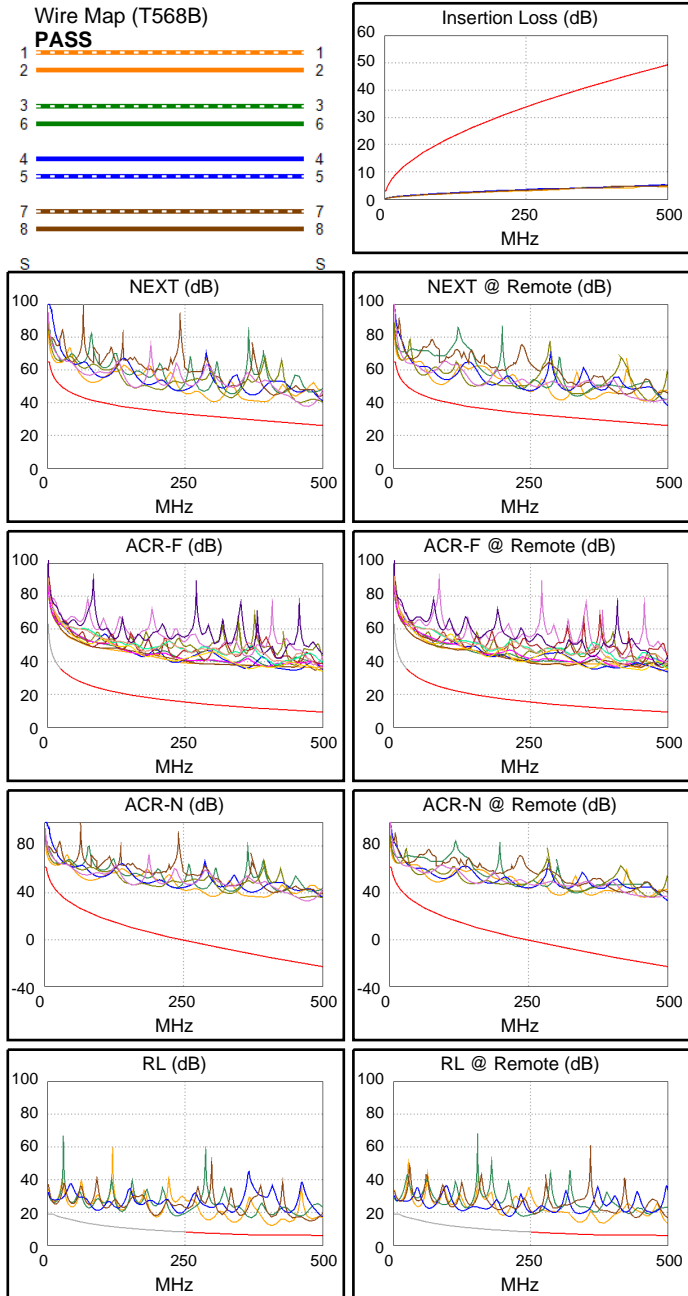
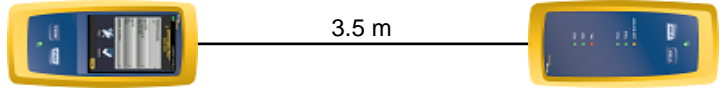
Main S/N: 1747425

Remote S/N: 1747424

Main Adapter: DSX-CHA804

Remote Adapter: DSX-CHA804

Length (m), Limit 100.0	[Pair 12]	3.5
Prop. Delay (ns), Limit 555	[Pair 36]	18
Delay Skew (ns), Limit 50	[Pair 36]	1
Resistance (ohms)	[Pair 36]	5.38
Insertion Loss Margin (dB)	[Pair 45]	43.4
Frequency (MHz)	[Pair 45]	489.0
Limit (dB)	[Pair 45]	48.7



Worst Case Margin Worst Case Value

PASS	MAIN	SR	MAIN	SR
Worst Pair	12-36	12-36	45-78	12-78
NEXT (dB)	8.8	9.3	10.9	12.0
Freq. (MHz)	303.0	4.5	472.0	500.0
Limit (dB)	31.7	62.2	26.8	26.1
Worst Pair	36	36	78	12
PS NEXT (dB)	10.9	10.1	11.7	13.2
Freq. (MHz)	10.8	7.5	469.0	500.0
Limit (dB)	53.5	56.1	24.0	23.2

PASS	MAIN	SR	MAIN	SR
Worst Pair	36-12	12-36	78-12	12-78
ACR-F (dB)	23.1	22.7	24.9	24.7
Freq. (MHz)	312.0	310.0	500.0	500.0
Limit (dB)	13.4	13.4	9.3	9.3
Worst Pair	12	12	12	78
PS ACR-F (dB)	23.4	23.3	24.4	25.6
Freq. (MHz)	366.0	64.5	500.0	498.0
Limit (dB)	9.0	24.1	6.3	6.3

N/A	MAIN	SR	MAIN	SR
Worst Pair	12-36	12-36	45-78	12-78
ACR-N (dB)	14.1	13.2	54.0	56.5
Freq. (MHz)	3.1	3.3	472.0	500.0
Limit (dB)	61.1	60.7	-21.0	-23.2
Worst Pair	36	36	78	12
PS ACR-N (dB)	14.9	13.9	54.6	57.9
Freq. (MHz)	3.3	3.6	469.0	500.0
Limit (dB)	58.2	57.3	-23.6	-26.1

PASS	MAIN	SR	MAIN	SR
Worst Pair	12	12	12	12
RL (dB)	5.9	7.1	5.9	7.1
Freq. (MHz)	408.0	382.0	408.0	382.0
Limit (dB)	6.0	6.2	6.0	6.2

Compliant Network Standards:
 10BASE-T 100BASE-TX 100BASE-T4
 1000BASE-T 2.5GBASE-T 5GBASE-T
 10GBASE-T ATM-25 ATM-51
 ATM-155 100VG-AnyLan TR-4
 TR-16 Active TR-16 Passive



Cable ID: CAT6A-SLIM-3M-4

Date / Time: 08/24/2019 09:31:13 PM

Headroom 8.8 dB (NEXT 36-78)

Test Limit: TIA Cat 6A Channel

Cable Type: Cat 6A U/UTP

NVP: 68.2%

Operator: KINGDATA

Software Version: V6.1 Build 3

Limits Version: V7.1

Calibration Start Date:

Main (Module): 05/11/2018

Remote (Module): 05/11/2018

Test Summary: PASS

Model: DSX-8000

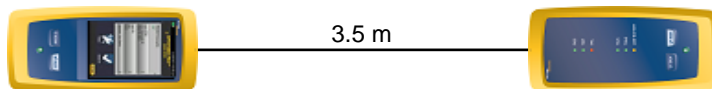
Main S/N: 1747425

Remote S/N: 1747424

Main Adapter: DSX-CHA804

Remote Adapter: DSX-CHA804

Length (m), Limit 100.0	[Pair 12]	3.5
Prop. Delay (ns), Limit 555	[Pair 36]	17
Delay Skew (ns), Limit 50	[Pair 12]	0
Resistance (ohms)	[Pair 12]	4.34
Insertion Loss Margin (dB)	[Pair 45]	41.8
Frequency (MHz)	[Pair 45]	459.0
Limit (dB)	[Pair 45]	47.1



Worst Case Margin Worst Case Value

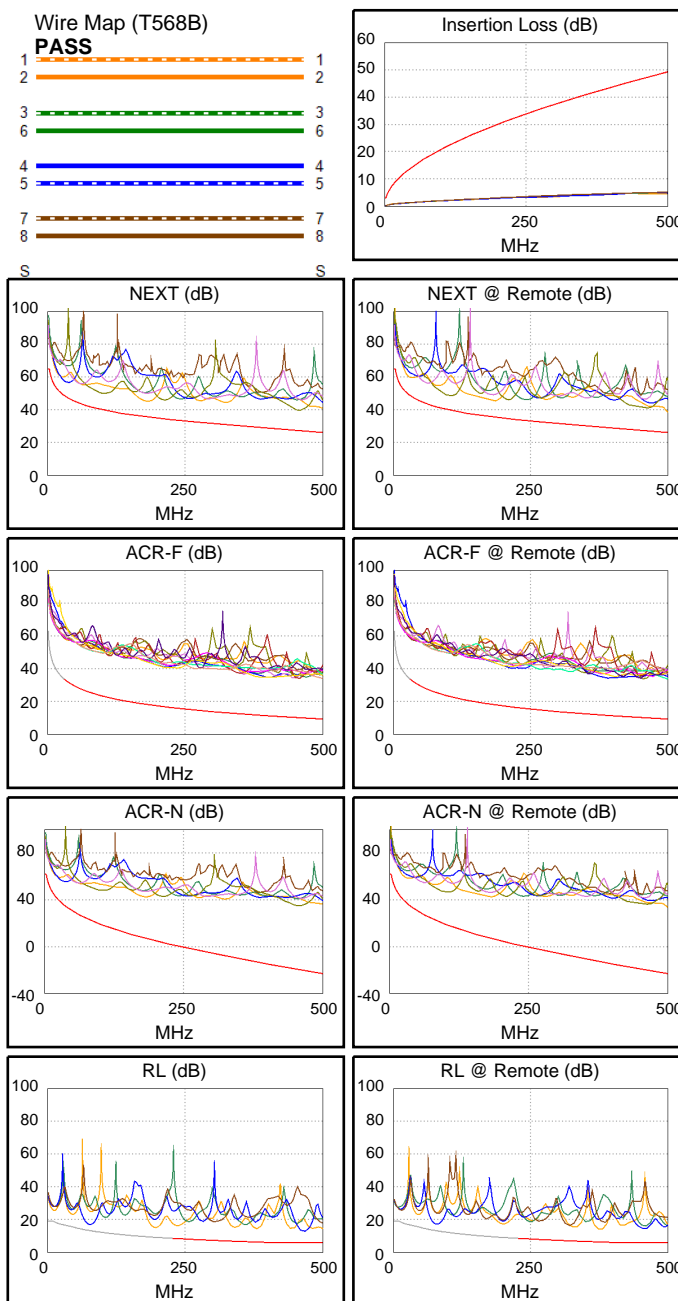
PASS	MAIN	SR	MAIN	SR
Worst Pair	12-78	36-78	36-78	12-36
NEXT (dB)	8.9	8.8	12.6	12.3
Freq. (MHz)	31.5	95.5	458.0	500.0
Limit (dB)	48.4	40.3	27.1	26.1
Worst Pair	12	36	78	12
PS NEXT (dB)	9.2	10.8	14.2	14.2
Freq. (MHz)	26.6	93.3	458.0	500.0
Limit (dB)	46.9	37.6	24.2	23.2

PASS	MAIN	SR	MAIN	SR
Worst Pair	78-12	12-78	45-36	36-45
ACR-F (dB)	23.2	22.8	23.9	23.5
Freq. (MHz)	393.0	393.0	457.0	457.0
Limit (dB)	11.4	11.4	10.1	10.1
Worst Pair	78	36	45	78
PS ACR-F (dB)	23.7	23.8	24.8	24.5
Freq. (MHz)	412.0	451.0	487.0	500.0
Limit (dB)	8.0	7.2	6.5	6.3

N/A	MAIN	SR	MAIN	SR
Worst Pair	12-36	36-45	36-78	12-36
ACR-N (dB)	17.7	17.8	54.8	56.8
Freq. (MHz)	16.1	3.0	458.0	500.0
Limit (dB)	45.0	61.4	-19.9	-23.2
Worst Pair	12	45	78	12
PS ACR-N (dB)	17.6	18.7	56.4	59.0
Freq. (MHz)	18.6	3.5	458.0	500.0
Limit (dB)	40.7	57.6	-22.8	-26.1

PASS	MAIN	SR	MAIN	SR
Worst Pair	45	12	45	12
RL (dB)	6.6	7.6	6.6	7.6
Freq. (MHz)	466.0	378.0	466.0	378.0
Limit (dB)	6.0	6.2	6.0	6.2

Compliant Network Standards:
 10BASE-T 100BASE-TX 100BASE-T4
 1000BASE-T 2.5GBASE-T 5GBASE-T
 10GBASE-T ATM-25 ATM-51
 ATM-155 100VG-AnyLan TR-4
 TR-16 Active TR-16 Passive





Cable ID: CAT6A-SLIM-3M-3

Date / Time: 08/24/2019 09:30:53 PM

Headroom 8.1 dB (NEXT 36-78)

Test Limit: TIA Cat 6A Channel

Cable Type: Cat 6A U/UTP

NVP: 68.2%

Operator: KINGDATA

Software Version: V6.1 Build 3

Limits Version: V7.1

Calibration Start Date:

Main (Module): 05/11/2018

Remote (Module): 05/11/2018

Test Summary: PASS

Model: DSX-8000

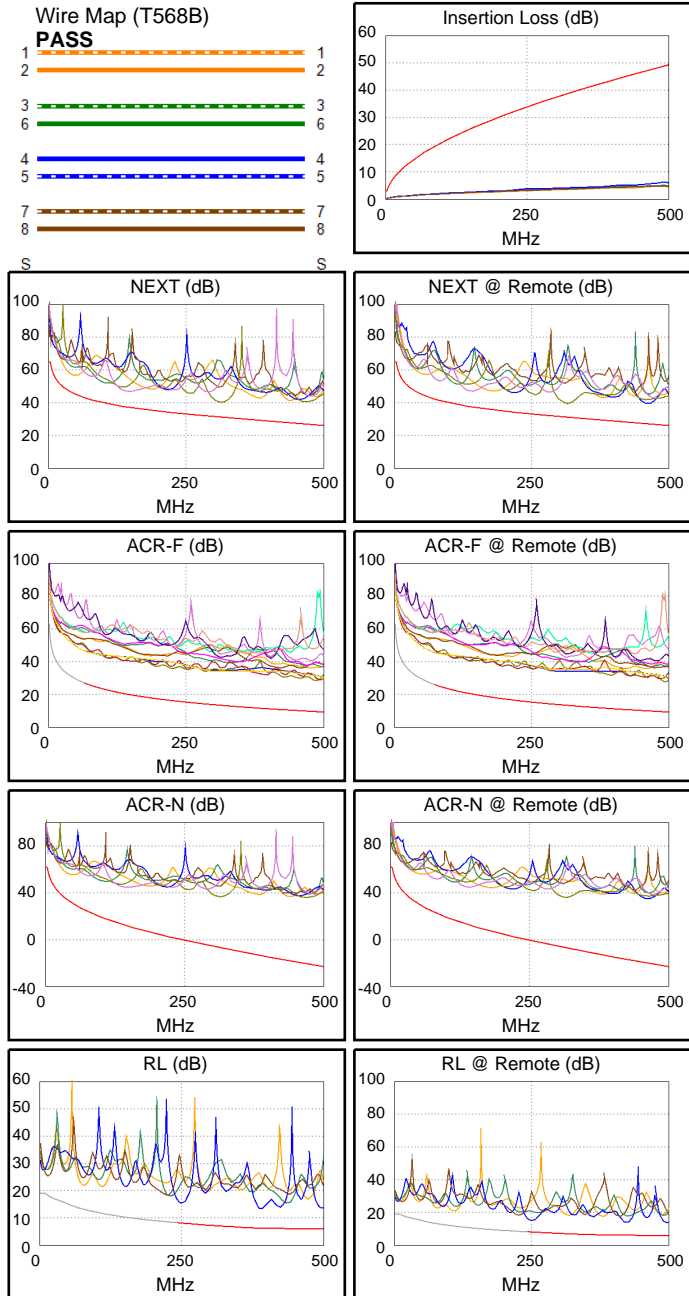
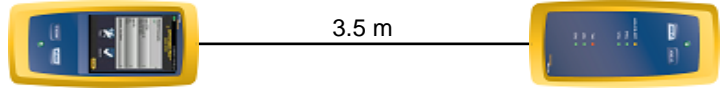
Main S/N: 1747425

Remote S/N: 1747424

Main Adapter: DSX-CHA804

Remote Adapter: DSX-CHA804

Length (m), Limit 100.0	[Pair 12]	3.5
Prop. Delay (ns), Limit 555	[Pair 36]	17
Delay Skew (ns), Limit 50	[Pair 12]	0
Resistance (ohms)	[Pair 45]	5.61
Insertion Loss Margin (dB)	[Pair 45]	42.7
Frequency (MHz)	[Pair 45]	493.0
Limit (dB)	[Pair 45]	48.9



Worst Case Margin Worst Case Value

PASS	MAIN	SR	MAIN	SR
Worst Pair	36-78	36-78	36-78	12-78
NEXT (dB)	8.8	8.1	8.8	12.4
Freq. (MHz)	314.0	316.0	314.0	462.0
Limit (dB)	31.4	31.4	31.4	27.0
Worst Pair	78	36	78	78
PS NEXT (dB)	10.6	10.8	13.9	12.6
Freq. (MHz)	137.5	316.0	470.0	466.0
Limit (dB)	34.7	28.4	23.9	24.0

PASS	MAIN	SR	MAIN	SR
Worst Pair	36-45	36-45	36-45	36-45
ACR-F (dB)	18.9	18.3	18.9	18.3
Freq. (MHz)	487.0	493.0	487.0	493.0
Limit (dB)	9.5	9.4	9.5	9.4
Worst Pair	45	45	45	45
PS ACR-F (dB)	21.5	20.8	21.5	20.8
Freq. (MHz)	488.0	493.0	488.0	493.0
Limit (dB)	6.5	6.4	6.5	6.4

N/A	MAIN	SR	MAIN	SR
Worst Pair	36-45	36-45	36-78	12-78
ACR-N (dB)	18.5	16.5	57.2	55.1
Freq. (MHz)	3.0	2.9	475.0	462.0
Limit (dB)	61.4	61.4	-21.2	-20.2
Worst Pair	45	45	78	78
PS ACR-N (dB)	20.5	18.6	56.9	55.4
Freq. (MHz)	3.8	3.3	470.0	466.0
Limit (dB)	57.0	58.2	-23.7	-23.4

PASS	MAIN	SR	MAIN	SR
Worst Pair	45	45	45	45
RL (dB)	7.2	7.1	7.2	7.8
Freq. (MHz)	391.0	252.0	391.0	424.0
Limit (dB)	6.1	8.0	6.1	6.0

Compliant Network Standards:
 10BASE-T 100BASE-TX 100BASE-T4
 1000BASE-T 2.5GBASE-T 5GBASE-T
 10GBASE-T ATM-25 ATM-51
 ATM-155 100VG-AnyLan TR-4
 TR-16 Active TR-16 Passive



Cable ID: CAT6A-SLIM-3M-2

Date / Time: 08/24/2019 09:30:23 PM

Headroom 6.6 dB (NEXT 36-78)

Test Limit: TIA Cat 6A Channel

Cable Type: Cat 6A U/UTP

NVP: 68.2%

Operator: KINGDATA

Software Version: V6.1 Build 3

Limits Version: V7.1

Calibration Start Date:

Main (Module): 05/11/2018

Remote (Module): 05/11/2018

Test Summary: PASS

Model: DSX-8000

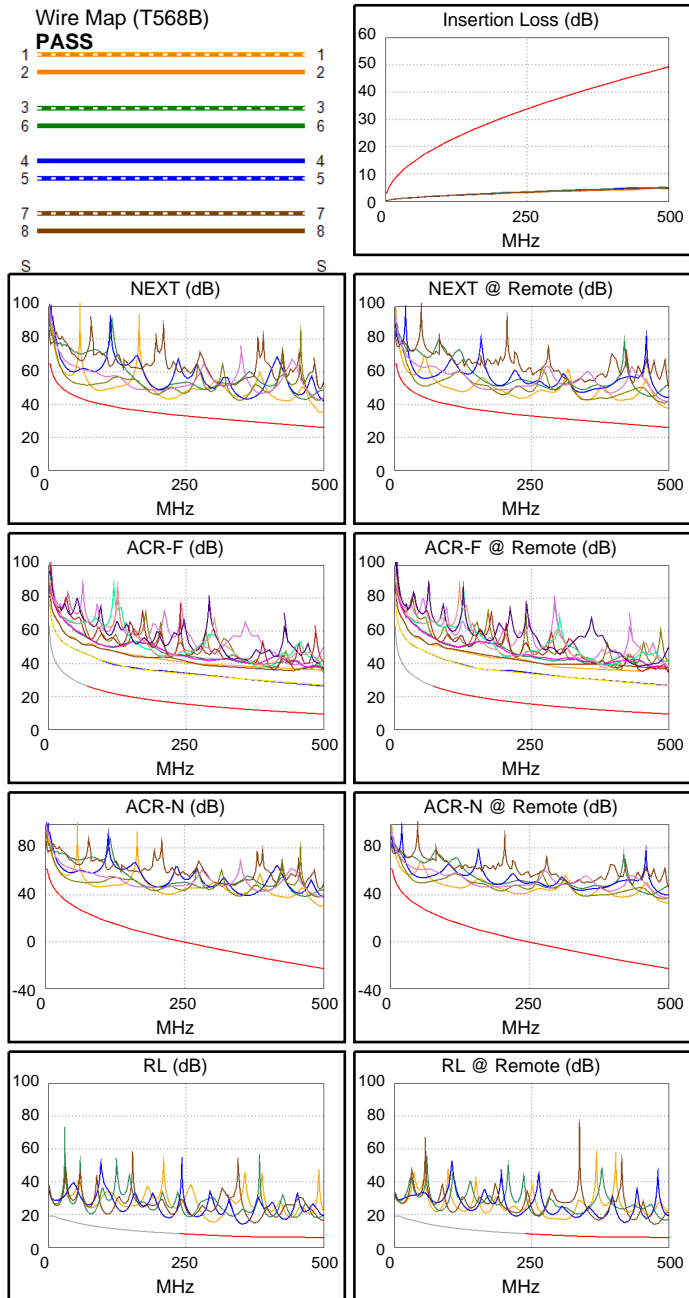
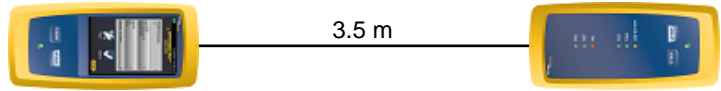
Main S/N: 1747425

Remote S/N: 1747424

Main Adapter: DSX-CHA804

Remote Adapter: DSX-CHA804

Length (m), Limit 100.0	[Pair 12]	3.5
Prop. Delay (ns), Limit 555	[Pair 36]	18
Delay Skew (ns), Limit 50	[Pair 36]	1
Resistance (ohms)	[Pair 36]	4.04
Insertion Loss Margin (dB)	[Pair 36]	43.4
Frequency (MHz)	[Pair 36]	487.0
Limit (dB)	[Pair 36]	48.6



Worst Case Margin Worst Case Value

PASS	MAIN	SR	MAIN	SR
Worst Pair	36-78	36-78	12-36	12-36
NEXT (dB)	7.8	6.6	9.1	11.8
Freq. (MHz)	47.0	49.0	496.0	500.0
Limit (dB)	45.5	45.2	26.2	26.1
Worst Pair	36	78	12	36
PS NEXT (dB)	8.9	7.9	11.1	13.2
Freq. (MHz)	37.5	49.8	496.0	500.0
Limit (dB)	44.4	42.3	23.3	23.2

PASS	MAIN	SR	MAIN	SR
Worst Pair	12-78	12-78	12-78	78-12
ACR-F (dB)	17.0	16.9	17.2	17.3
Freq. (MHz)	479.0	445.0	500.0	500.0
Limit (dB)	9.7	10.3	9.3	9.3
Worst Pair	12	12	12	12
PS ACR-F (dB)	19.3	19.2	19.9	19.5
Freq. (MHz)	443.0	479.0	500.0	500.0
Limit (dB)	7.3	6.7	6.3	6.3

N/A	MAIN	SR	MAIN	SR
Worst Pair	36-45	36-45	12-36	12-36
ACR-N (dB)	17.4	15.7	53.1	56.2
Freq. (MHz)	3.0	2.9	495.0	500.0
Limit (dB)	61.4	61.4	-22.8	-23.2
Worst Pair	36	45	36	36
PS ACR-N (dB)	19.4	18.1	55.2	57.6
Freq. (MHz)	3.3	3.4	495.0	500.0
Limit (dB)	58.2	57.9	-25.7	-26.1

PASS	MAIN	SR	MAIN	SR
Worst Pair	45	78	45	78
RL (dB)	7.5	7.9	7.5	7.9
Freq. (MHz)	354.0	477.0	354.0	477.0
Limit (dB)	6.5	6.0	6.5	6.0

Compliant Network Standards:

10BASE-T	100BASE-TX	100BASE-T4
1000BASE-T	2.5GBASE-T	5GBASE-T
10GBASE-T	ATM-25	ATM-51
ATM-155	100VG-AnyLan	TR-4
TR-16 Active	TR-16 Passive	



Cable ID: CAT6A-SLIM-3M-1

Date / Time: 08/24/2019 09:29:51 PM

Headroom 9.9 dB (NEXT 12-45)

Test Limit: TIA Cat 6A Channel

Cable Type: Cat 6A U/UTP

NVP: 68.2%

Operator: KINGDATA

Software Version: V6.1 Build 3

Limits Version: V7.1

Calibration Start Date:

Main (Module): 05/11/2018

Remote (Module): 05/11/2018

Test Summary: PASS

Model: DSX-8000

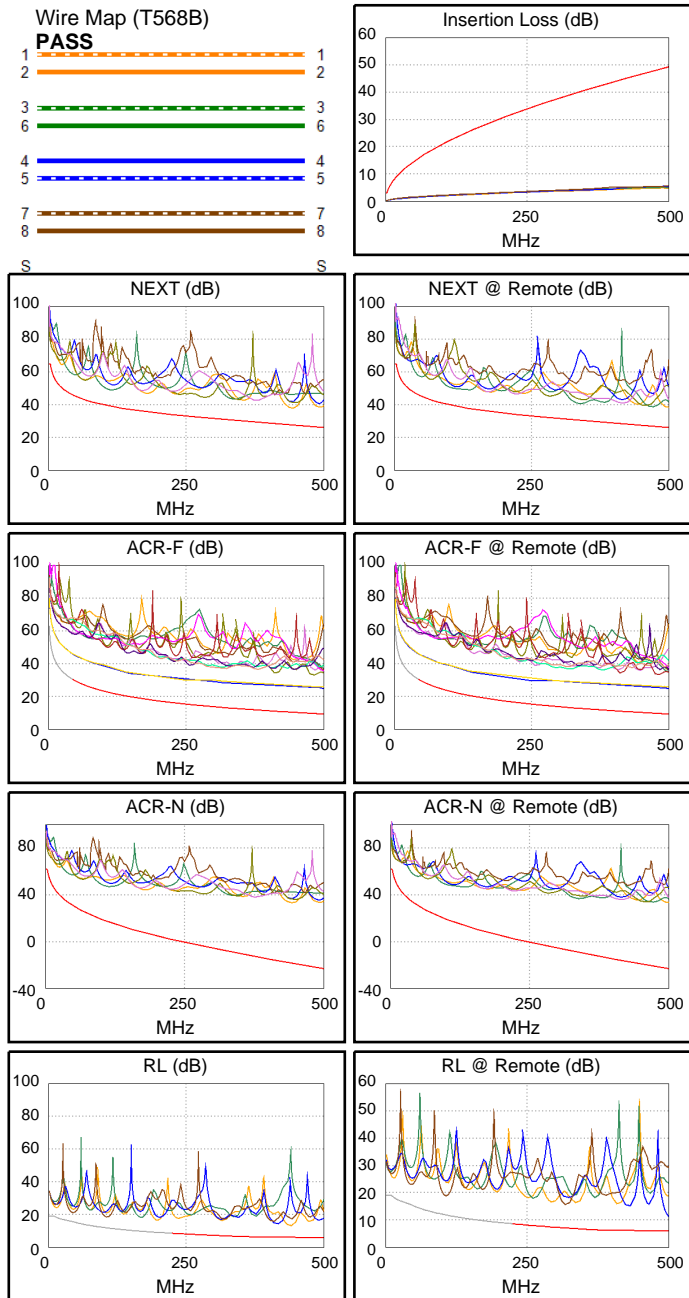
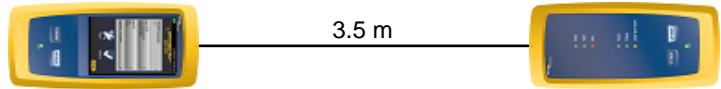
Main S/N: 1747425

Remote S/N: 1747424

Main Adapter: DSX-CHA804

Remote Adapter: DSX-CHA804

Length (m), Limit 100.0	[Pair 12]	3.5
Prop. Delay (ns), Limit 555	[Pair 36]	18
Delay Skew (ns), Limit 50	[Pair 36]	1
Resistance (ohms)	[Pair 78]	4.86
Insertion Loss Margin (dB)	[Pair 78]	43.8
Frequency (MHz)	[Pair 78]	500.0
Limit (dB)	[Pair 78]	49.3



Worst Case Margin Worst Case Value

PASS	MAIN	SR	MAIN	SR
Worst Pair	12-45	12-45	12-36	12-36
NEXT (dB)	10.0	9.9	10.3	12.5
Freq. (MHz)	111.0	339.0	445.0	498.0
Limit (dB)	39.2	30.7	27.5	26.1
Worst Pair	12	12	12	12
PS NEXT (dB)	10.5	9.9	11.3	13.6
Freq. (MHz)	113.0	113.0	444.0	500.0
Limit (dB)	36.2	36.2	24.6	23.2

PASS	MAIN	SR	MAIN	SR
Worst Pair	12-78	12-78	12-78	12-78
ACR-F (dB)	13.7	13.9	13.7	14.4
Freq. (MHz)	447.0	376.0	447.0	466.0
Limit (dB)	10.3	11.8	10.3	9.9
Worst Pair	78	78	78	78
PS ACR-F (dB)	16.6	16.3	16.7	16.7
Freq. (MHz)	447.0	376.0	449.0	448.0
Limit (dB)	7.3	8.8	7.2	7.2

N/A	MAIN	SR	MAIN	SR
Worst Pair	36-78	36-78	12-36	12-36
ACR-N (dB)	17.3	15.6	51.9	56.8
Freq. (MHz)	3.0	3.3	445.0	499.0
Limit (dB)	61.4	60.7	-18.8	-23.1
Worst Pair	36	36	12	12
PS ACR-N (dB)	17.7	15.2	56.9	58.3
Freq. (MHz)	4.0	3.8	493.0	500.0
Limit (dB)	56.4	57.0	-25.5	-26.1

PASS	MAIN	SR	MAIN	SR
Worst Pair	12	45	12	45
RL (dB)	7.0	5.3	7.0	5.3
Freq. (MHz)	440.0	500.0	440.0	500.0
Limit (dB)	6.0	6.0	6.0	6.0

Compliant Network Standards:

10BASE-T	100BASE-TX	100BASE-T4
1000BASE-T	2.5GBASE-T	5GBASE-T
10GBASE-T	ATM-25	ATM-51
ATM-155	100VG-AnyLan	TR-4
TR-16 Active	TR-16 Passive	



Cable ID: CAT6A-SLIM-2M-5

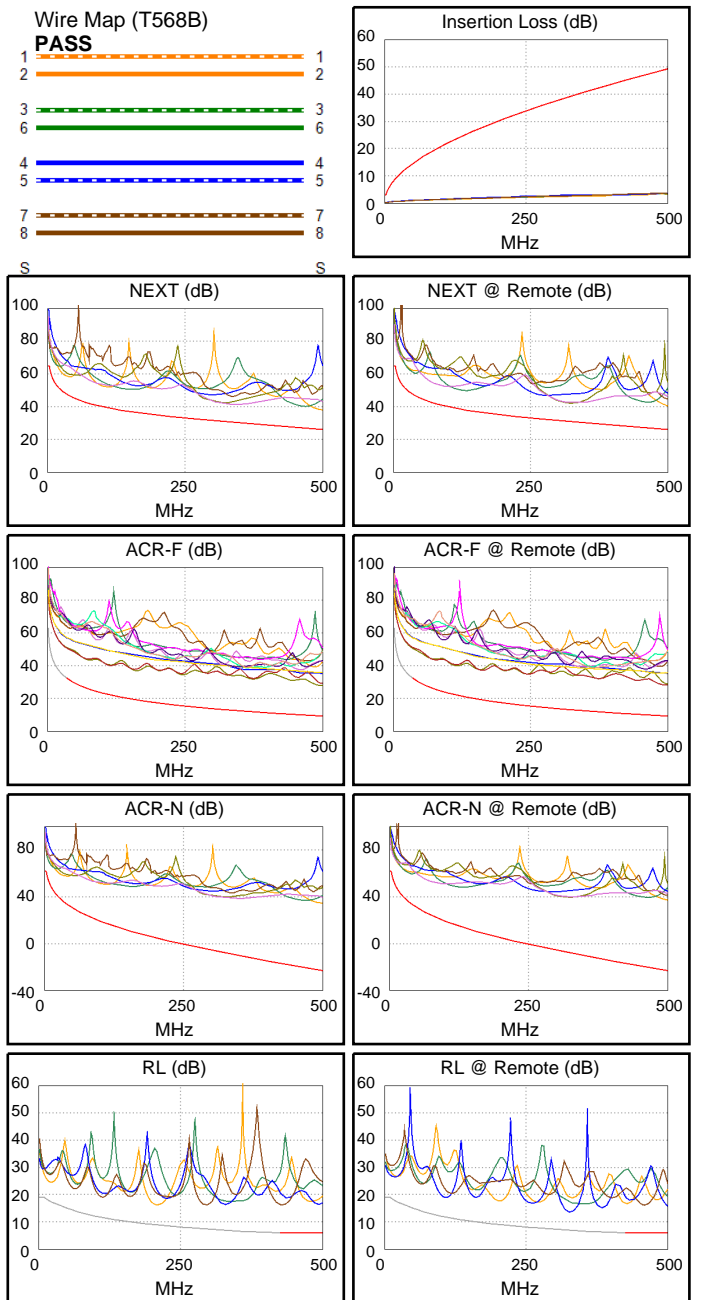
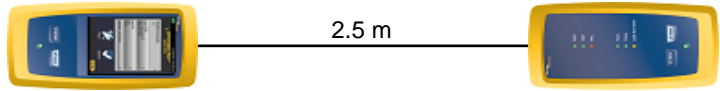
Date / Time: 08/24/2019 09:29:17 PM
Headroom 10.5 dB (NEXT 45-78)
Test Limit: TIA Cat 6A Channel
 Cable Type: Cat 6A U/UTP
 NVP: 68.2%

Operator: KINGDATA
 Software Version: V6.1 Build 3
 Limits Version: V7.1
 Calibration Start Date:
 Main (Module): 05/11/2018
 Remote (Module): 05/11/2018

Test Summary: PASS

Model: DSX-8000
 Main S/N: 1747425
 Remote S/N: 1747424
 Main Adapter: DSX-CHA804
 Remote Adapter: DSX-CHA804

Length (m), Limit 100.0	[Pair 12]	2.5
Prop. Delay (ns), Limit 555	[Pair 36]	12
Delay Skew (ns), Limit 50	[Pair 12]	0
Resistance (ohms)	[Pair 45]	4.88
Insertion Loss Margin (dB)	[Pair 45]	45.7
Frequency (MHz)	[Pair 45]	499.0
Limit (dB)	[Pair 45]	49.3



Worst Case Margin Worst Case Value

PASS	MAIN	SR	MAIN	SR
Worst Pair	45-78	36-78	12-36	12-36
NEXT (dB)	10.5	10.9	11.9	14.3
Freq. (MHz)	337.0	316.0	500.0	500.0
Limit (dB)	30.8	31.4	26.1	26.1
Worst Pair	78	78	12	78
PS NEXT (dB)	10.3	10.4	13.8	10.4
Freq. (MHz)	320.0	323.0	499.0	323.0
Limit (dB)	28.3	28.2	23.3	28.2

PASS	MAIN	SR	MAIN	SR
Worst Pair	36-45	45-36	36-45	45-36
ACR-F (dB)	17.6	17.6	18.7	18.9
Freq. (MHz)	73.3	70.8	499.0	497.0
Limit (dB)	26.0	26.3	9.3	9.3
Worst Pair	45	36	45	36
PS ACR-F (dB)	20.5	20.5	21.7	21.7
Freq. (MHz)	162.0	70.8	499.0	496.0
Limit (dB)	16.1	23.3	6.3	6.3

N/A	MAIN	SR	MAIN	SR
Worst Pair	12-45	36-45	12-36	12-36
ACR-N (dB)	16.2	19.2	57.9	60.3
Freq. (MHz)	4.1	2.9	500.0	500.0
Limit (dB)	58.6	61.4	-23.2	-23.2
Worst Pair	45	45	12	36
PS ACR-N (dB)	15.4	18.9	59.3	61.8
Freq. (MHz)	4.0	3.5	493.0	500.0
Limit (dB)	56.4	57.6	-25.5	-26.1

PASS	MAIN	SR	MAIN	SR
Worst Pair	45	45	78	45
RL (dB)	9.5	6.6	10.1	6.7
Freq. (MHz)	329.0	327.0	431.0	329.0
Limit (dB)	6.8	6.9	6.0	6.8

Compliant Network Standards:
 10BASE-T 100BASE-TX 100BASE-T4
 1000BASE-T 2.5GBASE-T 5GBASE-T
 10GBASE-T ATM-25 ATM-51
 ATM-155 100VG-AnyLan TR-4
 TR-16 Active TR-16 Passive



Cable ID: CAT6A-SLIM-2M-4

Date / Time: 08/24/2019 09:28:55 PM

Headroom 10.3 dB (NEXT 12-36)

Test Limit: TIA Cat 6A Channel

Cable Type: Cat 6A U/UTP

NVP: 68.2%

Operator: KINGDATA

Software Version: V6.1 Build 3

Limits Version: V7.1

Calibration Start Date:

Main (Module): 05/11/2018

Remote (Module): 05/11/2018

Test Summary: PASS

Model: DSX-8000

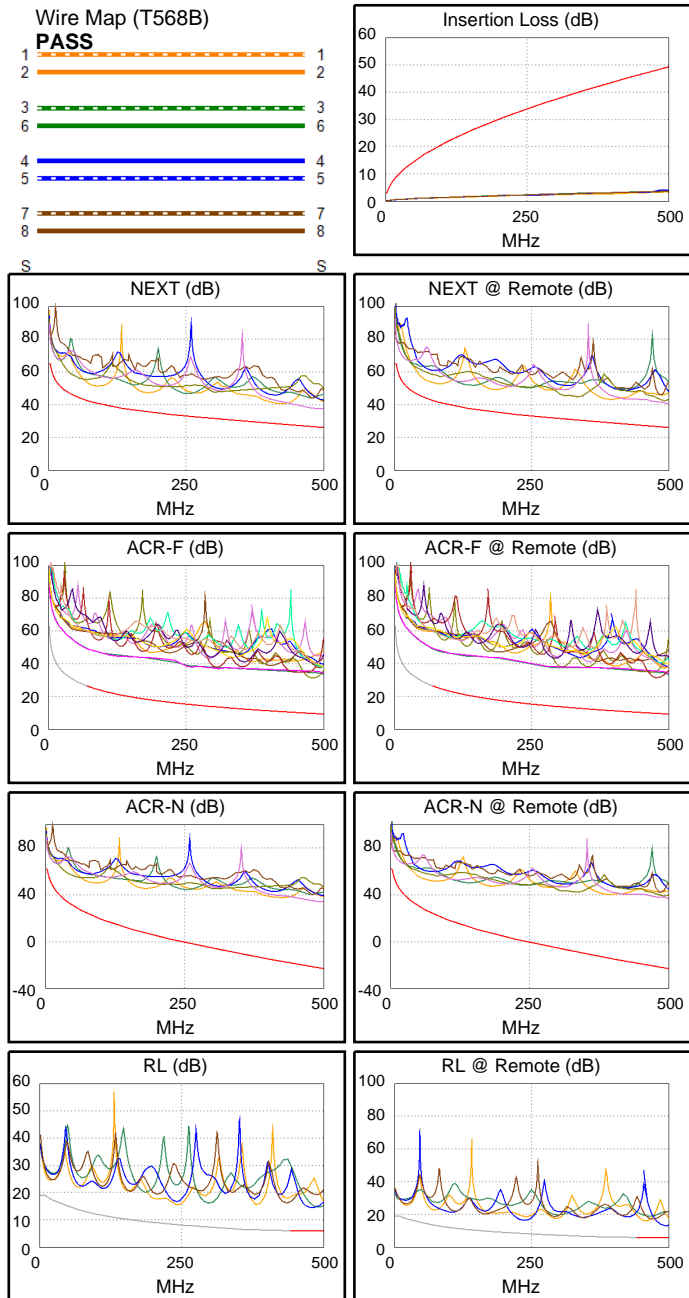
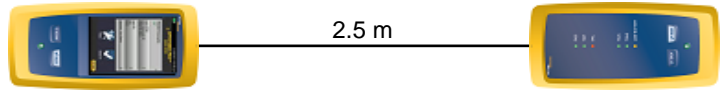
Main S/N: 1747425

Remote S/N: 1747424

Main Adapter: DSX-CHA804

Remote Adapter: DSX-CHA804

Length (m), Limit 100.0	[Pair 12]	2.5
Prop. Delay (ns), Limit 555	[Pair 36]	12
Delay Skew (ns), Limit 50	[Pair 12]	0
Resistance (ohms)	[Pair 36]	2.84
Insertion Loss Margin (dB)	[Pair 45]	44.8
Frequency (MHz)	[Pair 45]	493.0
Limit (dB)	[Pair 45]	48.9



Worst Case Margin Worst Case Value

PASS	MAIN	SR	MAIN	SR
Worst Pair	12-36	12-36	45-78	45-78
NEXT (dB)	10.3	10.8	11.2	14.0
Freq. (MHz)	80.0	69.0	492.0	500.0
Limit (dB)	41.6	42.7	26.3	26.1
Worst Pair	36	36	45	78
PS NEXT (dB)	11.4	12.3	12.4	14.7
Freq. (MHz)	77.8	66.3	484.0	500.0
Limit (dB)	39.0	40.2	23.6	23.2

PASS	MAIN	SR	MAIN	SR
Worst Pair	36-45	45-36	36-45	45-36
ACR-F (dB)	21.6	21.7	21.6	21.7
Freq. (MHz)	481.0	479.0	481.0	479.0
Limit (dB)	9.6	9.7	9.6	9.7
Worst Pair	45	45	45	36
PS ACR-F (dB)	22.7	23.6	22.7	24.0
Freq. (MHz)	484.0	305.0	484.0	484.0
Limit (dB)	6.6	10.6	6.6	6.6

N/A	MAIN	SR	MAIN	SR
Worst Pair	45-78	36-45	45-78	45-78
ACR-N (dB)	17.7	18.5	56.6	59.8
Freq. (MHz)	3.5	3.0	492.0	500.0
Limit (dB)	60.1	61.4	-22.6	-23.2
Worst Pair	45	45	45	78
PS ACR-N (dB)	17.5	18.7	56.8	60.5
Freq. (MHz)	3.8	3.4	484.0	500.0
Limit (dB)	57.0	57.9	-24.8	-26.1

PASS	MAIN	SR	MAIN	SR
Worst Pair	45	45	45	45
RL (dB)	8.4	7.2	8.4	7.2
Freq. (MHz)	480.0	497.0	480.0	497.0
Limit (dB)	6.0	6.0	6.0	6.0

Compliant Network Standards:
 10BASE-T 100BASE-TX 100BASE-T4
 1000BASE-T 2.5GBASE-T 5GBASE-T
 10GBASE-T ATM-25 ATM-51
 ATM-155 100VG-AnyLan TR-4
 TR-16 Active TR-16 Passive



Cable ID: CAT6A-SLIM-2M-3

Date / Time: 08/24/2019 09:28:32 PM

Headroom 9.4 dB (NEXT 12-36)

Test Limit: TIA Cat 6A Channel

Cable Type: Cat 6A U/UTP

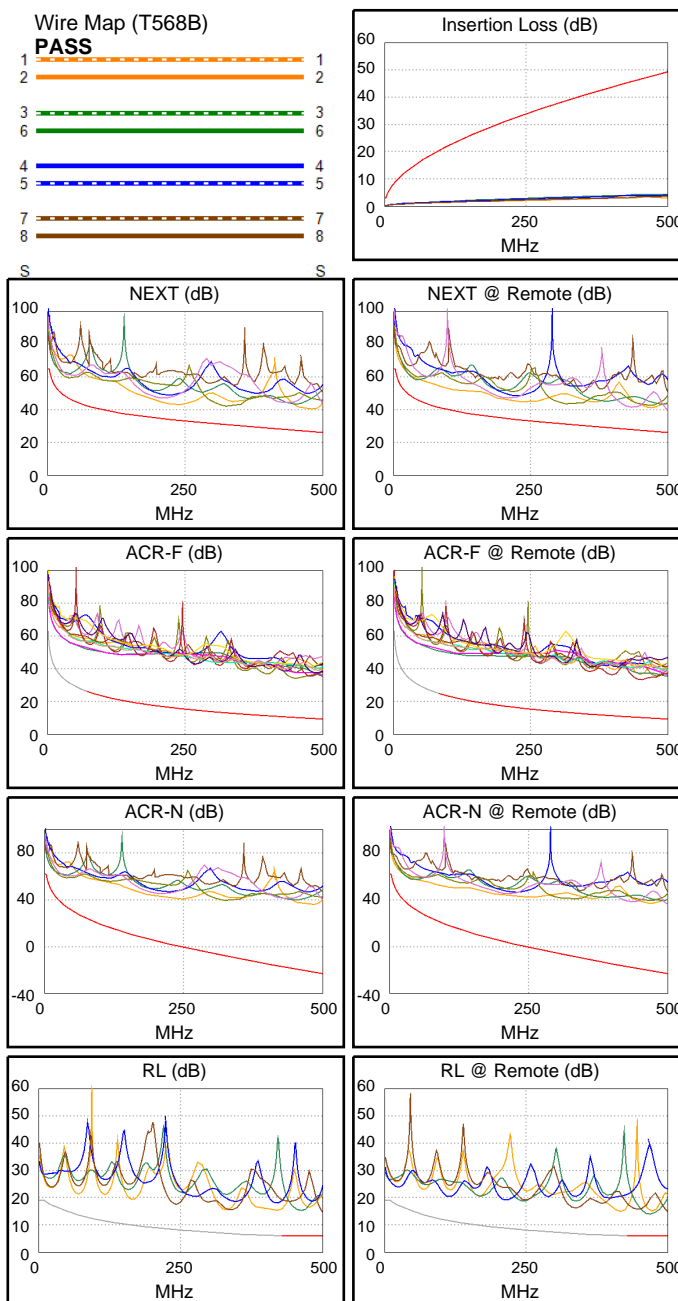
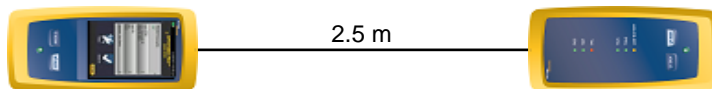
NVP: 68.2%

Operator: KINGDATA
Software Version: V6.1 Build 3
Limits Version: V7.1
Calibration Start Date:
Main (Module): 05/11/2018
Remote (Module): 05/11/2018

Test Summary: PASS

Model: DSX-8000
Main S/N: 1747425
Remote S/N: 1747424
Main Adapter: DSX-CHA804
Remote Adapter: DSX-CHA804

Length (m), Limit 100.0	[Pair 12]	2.5
Prop. Delay (ns), Limit 555	[Pair 36]	12
Delay Skew (ns), Limit 50	[Pair 12]	0
Resistance (ohms)	[Pair 36]	5.16
Insertion Loss Margin (dB)	[Pair 36]	44.6
Frequency (MHz)	[Pair 36]	493.0
Limit (dB)	[Pair 36]	48.9



Worst Case Margin Worst Case Value

PASS	MAIN	SR	MAIN	SR
Worst Pair	12-36	12-36	12-36	45-78
NEXT (dB)	9.4	11.2	13.8	13.5
Freq. (MHz)	229.5	235.5	482.0	500.0
Limit (dB)	33.8	33.6	26.5	26.1
Worst Pair	12	12	12	45
PS NEXT (dB)	11.1	11.8	15.0	14.9
Freq. (MHz)	225.0	39.5	463.0	500.0
Limit (dB)	31.0	44.0	24.1	23.2

PASS	MAIN	SR	MAIN	SR
Worst Pair	45-12	45-36	36-45	45-36
ACR-F (dB)	23.5	23.1	24.0	23.2
Freq. (MHz)	7.5	452.0	453.0	453.0
Limit (dB)	45.8	10.2	10.1	10.1
Worst Pair	45	12	45	36
PS ACR-F (dB)	23.9	23.9	26.1	24.2
Freq. (MHz)	1.3	1.1	498.0	452.0
Limit (dB)	58.3	59.2	6.3	7.2

N/A	MAIN	SR	MAIN	SR
Worst Pair	12-45	12-36	12-36	45-78
ACR-N (dB)	17.5	18.0	57.8	59.3
Freq. (MHz)	4.4	4.5	482.0	500.0
Limit (dB)	58.1	57.8	-21.8	-23.2
Worst Pair	45	36	36	45
PS ACR-N (dB)	17.3	17.9	59.8	60.4
Freq. (MHz)	4.4	3.4	484.0	500.0
Limit (dB)	55.6	57.9	-24.8	-26.1

PASS	MAIN	SR	MAIN	SR
Worst Pair	78	36	78	36
RL (dB)	8.5	7.9	8.5	7.9
Freq. (MHz)	500.0	469.0	500.0	469.0
Limit (dB)	6.0	6.0	6.0	6.0

Compliant Network Standards:
 10BASE-T 100BASE-TX 100BASE-T4
 1000BASE-T 2.5GBASE-T 5GBASE-T
 10GBASE-T ATM-25 ATM-51
 ATM-155 100VG-AnyLan TR-4
 TR-16 Active TR-16 Passive



Cable ID: CAT6A-SLIM-2M-2

Date / Time: 08/24/2019 09:27:54 PM

Headroom 8.0 dB (NEXT 36-78)

Test Limit: TIA Cat 6A Channel

Cable Type: Cat 6A U/UTP

NVP: 68.2%

Operator: KINGDATA

Software Version: V6.1 Build 3

Limits Version: V7.1

Calibration Start Date:

Main (Module): 05/11/2018

Remote (Module): 05/11/2018

Test Summary: PASS

Model: DSX-8000

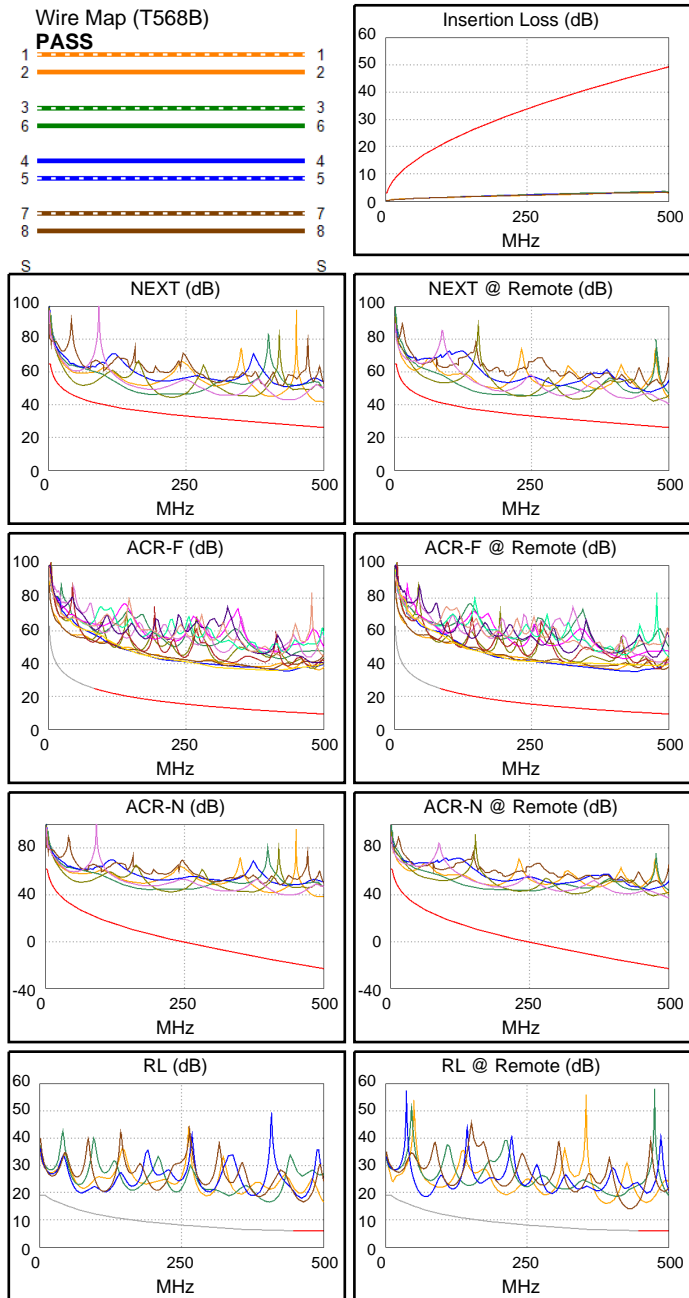
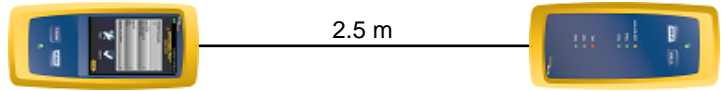
Main S/N: 1747425

Remote S/N: 1747424

Main Adapter: DSX-CHA804

Remote Adapter: DSX-CHA804

Length (m), Limit 100.0	[Pair 12]	2.5
Prop. Delay (ns), Limit 555	[Pair 36]	12
Delay Skew (ns), Limit 50	[Pair 12]	0
Resistance (ohms)	[Pair 12]	3.34
Insertion Loss Margin (dB)	[Pair 36]	45.5
Frequency (MHz)	[Pair 36]	494.0
Limit (dB)	[Pair 36]	49.0



Worst Case Margin Worst Case Value

PASS	MAIN	SR	MAIN	SR
Worst Pair	36-78	12-45	12-36	45-78
NEXT (dB)	8.0	10.6	15.6	14.5
Freq. (MHz)	55.3	164.0	500.0	500.0
Limit (dB)	44.3	36.3	26.1	26.1
Worst Pair	36	45	12	78
PS NEXT (dB)	9.8	11.7	17.6	16.0
Freq. (MHz)	52.0	184.5	500.0	497.0
Limit (dB)	42.0	32.5	23.2	23.3

PASS	MAIN	SR	MAIN	SR
Worst Pair	78-12	12-78	78-12	12-78
ACR-F (dB)	24.0	23.8	24.0	23.8
Freq. (MHz)	430.0	430.0	430.0	430.0
Limit (dB)	10.6	10.6	10.6	10.6
Worst Pair	12	12	12	12
PS ACR-F (dB)	25.1	25.5	25.2	26.0
Freq. (MHz)	407.0	229.0	412.0	441.0
Limit (dB)	8.1	13.1	8.0	7.4

N/A	MAIN	SR	MAIN	SR
Worst Pair	36-45	36-45	12-36	45-78
ACR-N (dB)	18.9	19.3	61.6	60.6
Freq. (MHz)	3.1	3.0	500.0	500.0
Limit (dB)	61.1	61.4	-23.2	-23.2
Worst Pair	36	36	36	78
PS ACR-N (dB)	20.2	19.1	63.6	61.9
Freq. (MHz)	3.6	3.3	500.0	497.0
Limit (dB)	57.3	58.2	-26.1	-25.8

PASS	MAIN	SR	MAIN	SR
Worst Pair	12	78	12	78
RL (dB)	10.4	8.0	10.4	8.0
Freq. (MHz)	500.0	433.0	500.0	433.0
Limit (dB)	6.0	6.0	6.0	6.0

Compliant Network Standards:
 10BASE-T 100BASE-TX 100BASE-T4
 1000BASE-T 2.5GBASE-T 5GBASE-T
 10GBASE-T ATM-25 ATM-51
 ATM-155 100VG-AnyLan TR-4
 TR-16 Active TR-16 Passive



Cable ID: CAT6A-SLIM-2M-1

Date / Time: 08/24/2019 09:27:24 PM

Headroom 9.8 dB (NEXT 45-78)

Test Limit: TIA Cat 6A Channel

Cable Type: Cat 6A U/UTP

NVP: 68.2%

Operator: KINGDATA

Software Version: V6.1 Build 3

Limits Version: V7.1

Calibration Start Date:

Main (Module): 05/11/2018

Remote (Module): 05/11/2018

Test Summary: PASS

Model: DSX-8000

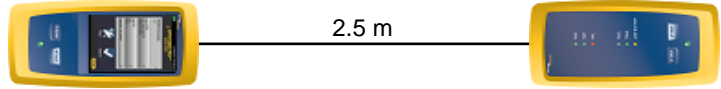
Main S/N: 1747425

Remote S/N: 1747424

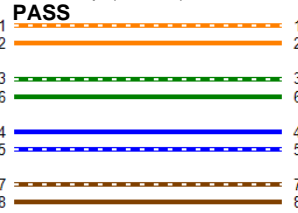
Main Adapter: DSX-CHA804

Remote Adapter: DSX-CHA804

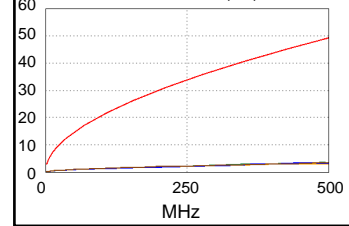
Length (m), Limit 100.0	[Pair 12]	2.5
Prop. Delay (ns), Limit 555	[Pair 36]	12
Delay Skew (ns), Limit 50	[Pair 12]	0
Resistance (ohms)	[Pair 12]	3.55
Insertion Loss Margin (dB)	[Pair 45]	43.6
Frequency (MHz)	[Pair 45]	461.0
Limit (dB)	[Pair 45]	47.2



Wire Map (T568B)

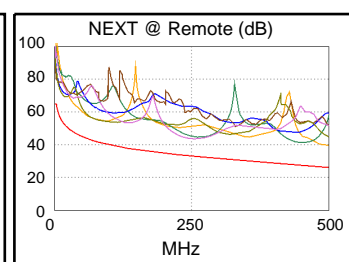
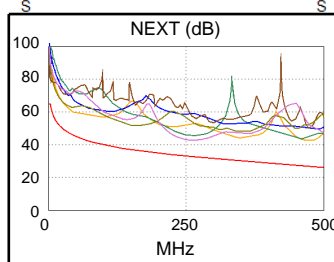


Insertion Loss (dB)

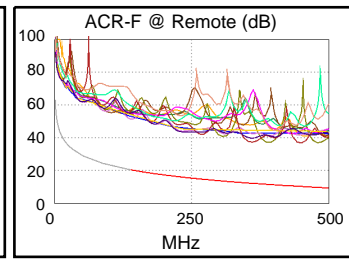
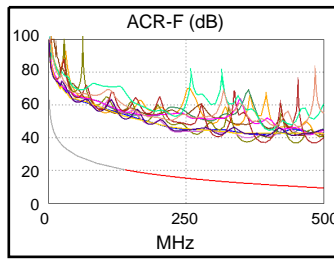


Worst Case Margin Worst Case Value

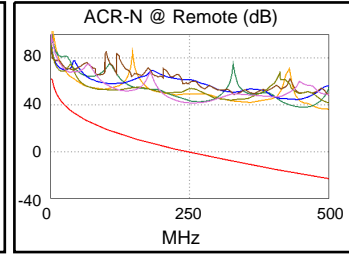
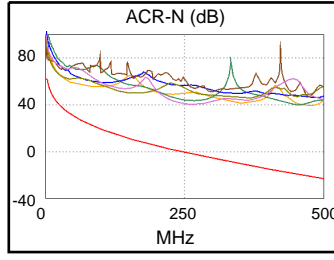
PASS	MAIN	SR	MAIN	SR
Worst Pair	45-78	45-78	12-36	12-36
NEXT (dB)	9.8	10.5	16.1	13.5
Freq. (MHz)	258.0	252.0	481.0	500.0
Limit (dB)	32.9	33.1	26.6	26.1
Worst Pair	45	45	12	36
PS NEXT (dB)	10.9	11.1	15.9	15.1
Freq. (MHz)	260.0	250.0	466.0	500.0
Limit (dB)	29.9	30.2	24.0	23.2



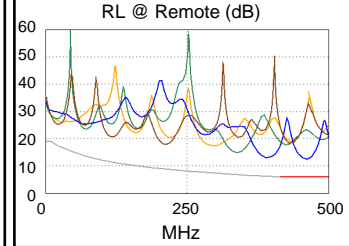
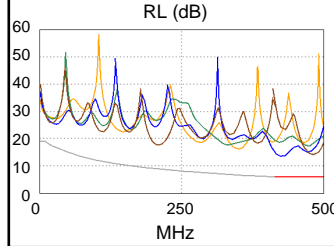
PASS	MAIN	SR	MAIN	SR
Worst Pair	36-45	45-36	36-45	45-36
ACR-F (dB)	25.3	25.1	26.3	26.5
Freq. (MHz)	362.0	359.0	449.0	449.0
Limit (dB)	12.1	12.2	10.2	10.2
Worst Pair	36	36	36	36
PS ACR-F (dB)	27.0	26.0	28.5	27.7
Freq. (MHz)	391.0	359.0	485.0	453.0
Limit (dB)	8.4	9.2	6.5	7.1



N/A	MAIN	SR	MAIN	SR
Worst Pair	36-45	36-45	12-36	12-36
ACR-N (dB)	19.7	18.6	61.0	59.4
Freq. (MHz)	3.0	3.0	481.0	500.0
Limit (dB)	61.4	61.4	-21.7	-23.2
Worst Pair	36	36	12	36
PS ACR-N (dB)	21.2	20.3	60.2	61.0
Freq. (MHz)	4.9	3.1	466.0	500.0
Limit (dB)	54.6	58.3	-23.4	-26.1



PASS	MAIN	SR	MAIN	SR
Worst Pair	45	45	45	45
RL (dB)	7.4	6.4	7.4	6.4
Freq. (MHz)	429.0	463.0	429.0	463.0
Limit (dB)	6.0	6.0	6.0	6.0



Compliant Network Standards:
 10BASE-T 100BASE-TX 100BASE-T4
 1000BASE-T 2.5GBASE-T 5GBASE-T
 10GBASE-T ATM-25 ATM-51
 ATM-155 100VG-AnyLan TR-4
 TR-16 Active TR-16 Passive



Cable ID: CAT6A-SLIM-1.5M-6

Date / Time: 08/24/2019 09:26:57 PM

Headroom 11.8 dB (NEXT 36-78)

Test Limit: TIA Cat 6A Channel

Cable Type: Cat 6A U/UTP

NVP: 68.2%

Operator: KINGDATA

Software Version: V6.1 Build 3

Limits Version: V7.1

Calibration Start Date:

Main (Module): 05/11/2018

Remote (Module): 05/11/2018

Test Summary: PASS

Model: DSX-8000

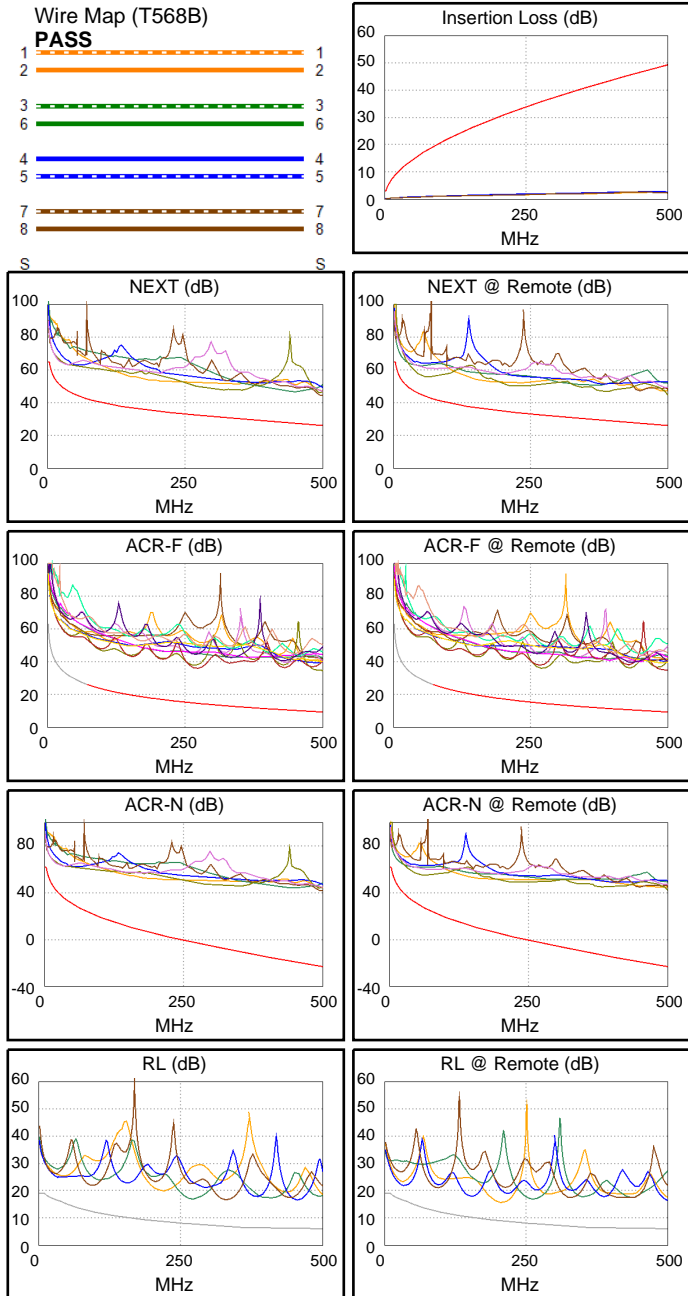
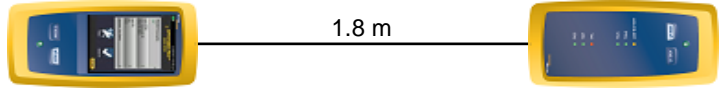
Main S/N: 1747425

Remote S/N: 1747424

Main Adapter: DSX-CHA804

Remote Adapter: DSX-CHA804

Length (m), Limit 100.0	[Pair 12]	1.8
Prop. Delay (ns), Limit 555	[Pair 36]	9
Delay Skew (ns), Limit 50	[Pair 12]	0
Resistance (ohms)	[Pair 45]	2.47
Insertion Loss Margin (dB)	[Pair 45]	45.7
Frequency (MHz)	[Pair 45]	487.0
Limit (dB)	[Pair 45]	48.6



Worst Case Margin Worst Case Value

PASS	MAIN	SR	MAIN	SR
Worst Pair	45-78	36-78	36-45	36-78
NEXT (dB)	14.2	11.8	18.3	18.5
Freq. (MHz)	20.5	54.5	499.0	500.0
Limit (dB)	51.5	44.4	26.1	26.1
Worst Pair	78	78	36	36
PS NEXT (dB)	13.6	12.8	17.9	18.5
Freq. (MHz)	17.5	49.3	500.0	500.0
Limit (dB)	49.9	42.4	23.2	23.2

PASS	MAIN	SR	MAIN	SR
Worst Pair	45-36	36-45	36-45	45-36
ACR-F (dB)	21.3	21.3	25.3	25.4
Freq. (MHz)	269.0	269.0	499.0	500.0
Limit (dB)	14.7	14.7	9.3	9.3
Worst Pair	36	45	45	36
PS ACR-F (dB)	23.6	23.8	27.5	26.6
Freq. (MHz)	269.0	269.0	499.0	500.0
Limit (dB)	11.7	11.7	6.3	6.3

N/A	MAIN	SR	MAIN	SR
Worst Pair	36-45	36-45	36-45	36-78
ACR-N (dB)	18.5	19.4	64.9	65.5
Freq. (MHz)	3.8	3.0	499.0	500.0
Limit (dB)	59.5	61.4	-23.1	-23.2
Worst Pair	36	45	36	36
PS ACR-N (dB)	18.0	18.7	64.7	65.3
Freq. (MHz)	3.8	3.3	500.0	500.0
Limit (dB)	57.0	58.2	-26.1	-26.1

N/A	MAIN	SR	MAIN	SR
Worst Pair	45	45	45	12
RL (dB)	8.3	5.4	10.5	6.7
Freq. (MHz)	34.3	33.8	458.0	206.0
Limit (dB)	16.3	16.4	6.0	8.9

Compliant Network Standards:
 10BASE-T 100BASE-TX 100BASE-T4
 1000BASE-T 2.5GBASE-T 5GBASE-T
 10GBASE-T ATM-25 ATM-51
 ATM-155 100VG-AnyLan TR-4
 TR-16 Active TR-16 Passive



Cable ID: CAT6A-SLIM-1.5M-5

Date / Time: 08/24/2019 09:26:37 PM

Headroom 12.6 dB (NEXT 36-45)

Test Limit: TIA Cat 6A Channel

Cable Type: Cat 6A U/UTP

NVP: 68.2%

Operator: KINGDATA

Software Version: V6.1 Build 3

Limits Version: V7.1

Calibration Start Date:

Main (Module): 05/11/2018

Remote (Module): 05/11/2018

Test Summary: PASS

Model: DSX-8000

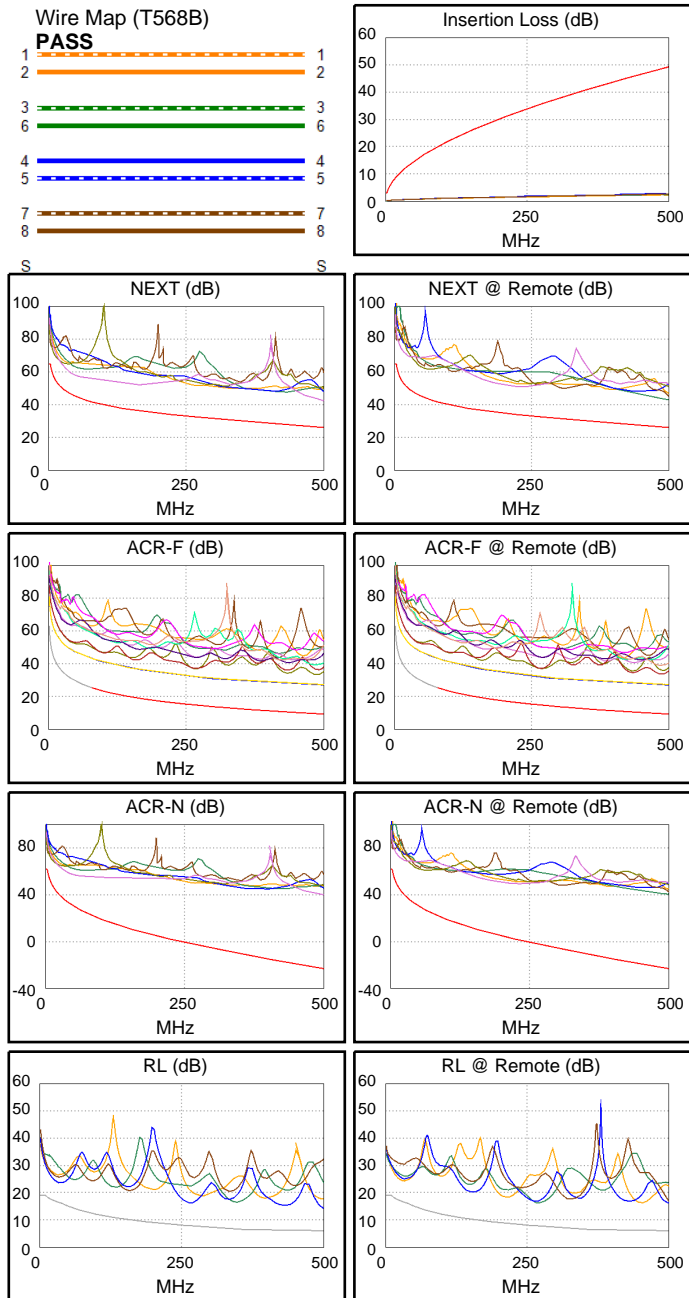
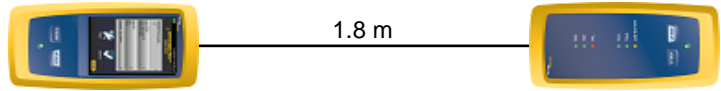
Main S/N: 1747425

Remote S/N: 1747424

Main Adapter: DSX-CHA804

Remote Adapter: DSX-CHA804

Length (m), Limit 100.0	[Pair 12]	1.8
Prop. Delay (ns), Limit 555	[Pair 36]	9
Delay Skew (ns), Limit 50	[Pair 12]	0
Resistance (ohms)	[Pair 12]	2.16
Insertion Loss Margin (dB)	[Pair 45]	45.9
Frequency (MHz)	[Pair 45]	489.0
Limit (dB)	[Pair 45]	48.7



Worst Case Margin Worst Case Value

PASS	MAIN	SR	MAIN	SR
Worst Pair	36-45	36-45	45-78	12-45
NEXT (dB)	12.6	15.4	16.4	17.1
Freq. (MHz)	3.3	3.0	500.0	500.0
Limit (dB)	64.5	65.0	26.1	26.1
Worst Pair	36	45	78	45
PS NEXT (dB)	12.9	16.9	17.7	17.5
Freq. (MHz)	3.3	3.3	500.0	500.0
Limit (dB)	62.0	62.0	23.2	23.2

PASS	MAIN	SR	MAIN	SR
Worst Pair	12-78	12-78	12-78	12-78
ACR-F (dB)	17.0	16.8	17.6	17.4
Freq. (MHz)	298.0	298.0	500.0	500.0
Limit (dB)	13.8	13.8	9.3	9.3
Worst Pair	78	78	78	78
PS ACR-F (dB)	19.8	19.7	20.4	20.4
Freq. (MHz)	285.0	398.0	500.0	500.0
Limit (dB)	11.2	8.3	6.3	6.3

N/A	MAIN	SR	MAIN	SR
Worst Pair	36-45	36-45	45-78	12-45
ACR-N (dB)	16.3	18.8	63.3	63.7
Freq. (MHz)	3.3	2.8	500.0	498.0
Limit (dB)	60.7	61.5	-23.2	-23.1
Worst Pair	36	45	78	45
PS ACR-N (dB)	16.6	20.6	64.6	64.3
Freq. (MHz)	3.3	3.3	500.0	500.0
Limit (dB)	58.2	58.2	-26.1	-26.1

N/A	MAIN	SR	MAIN	SR
Worst Pair	45	12	45	45
RL (dB)	7.1	7.7	8.2	10.1
Freq. (MHz)	33.8	30.5	500.0	500.0
Limit (dB)	16.4	16.6	6.0	6.0

Compliant Network Standards:

10BASE-T	100BASE-TX	100BASE-T4
1000BASE-T	2.5GBASE-T	5GBASE-T
10GBASE-T	ATM-25	ATM-51
ATM-155	100VG-AnyLan	TR-4
TR-16 Active	TR-16 Passive	



Cable ID: CAT6A-SLIM-1.5M-4

Date / Time: 08/24/2019 09:26:18 PM

Headroom 11.3 dB (NEXT 36-45)

Test Limit: TIA Cat 6A Channel

Cable Type: Cat 6A U/UTP

NVP: 68.2%

Operator: KINGDATA

Software Version: V6.1 Build 3

Limits Version: V7.1

Calibration Start Date:

Main (Module): 05/11/2018

Remote (Module): 05/11/2018

Test Summary: PASS

Model: DSX-8000

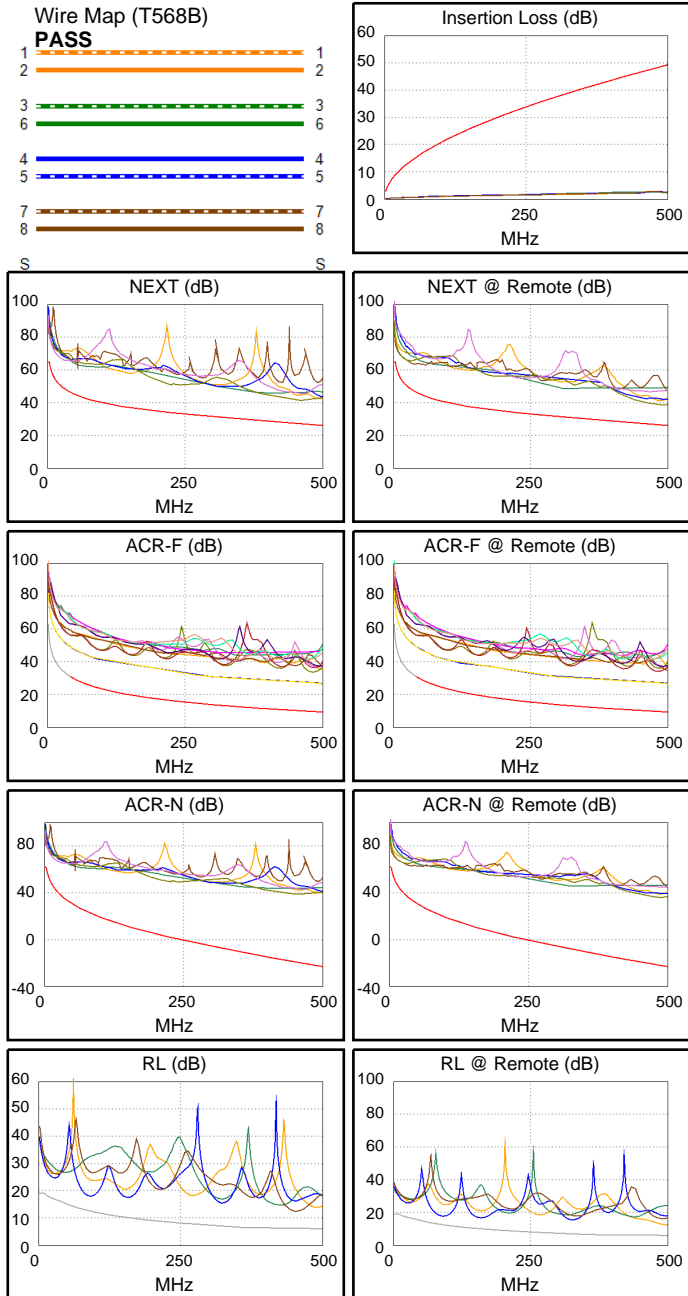
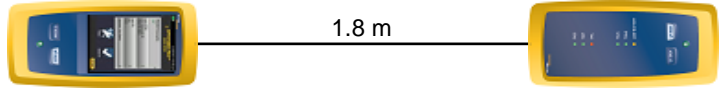
Main S/N: 1747425

Remote S/N: 1747424

Main Adapter: DSX-CHA804

Remote Adapter: DSX-CHA804

Length (m), Limit 100.0	[Pair 12]	1.8
Prop. Delay (ns), Limit 555	[Pair 36]	9
Delay Skew (ns), Limit 50	[Pair 12]	0
Resistance (ohms)	[Pair 45]	2.24
Insertion Loss Margin (dB)	[Pair 12]	45.2
Frequency (MHz)	[Pair 12]	479.0
Limit (dB)	[Pair 12]	48.2



Worst Case Margin Worst Case Value

PASS	MAIN	SR	MAIN	SR
Worst Pair	36-78	36-45	36-78	36-78
NEXT (dB)	13.8	11.3	13.8	12.3
Freq. (MHz)	451.0	3.6	451.0	492.0
Limit (dB)	27.3	63.7	27.3	26.3
Worst Pair	36	36	12	36
PS NEXT (dB)	15.0	11.2	15.9	13.2
Freq. (MHz)	453.0	3.9	496.0	492.0
Limit (dB)	24.4	60.8	23.3	23.4

PASS	MAIN	SR	MAIN	SR
Worst Pair	78-12	12-78	12-78	78-12
ACR-F (dB)	16.7	16.7	17.2	17.1
Freq. (MHz)	295.0	295.0	500.0	500.0
Limit (dB)	13.9	13.9	9.3	9.3
Worst Pair	12	12	78	12
PS ACR-F (dB)	19.4	19.5	19.9	19.5
Freq. (MHz)	295.0	500.0	500.0	500.0
Limit (dB)	10.9	6.3	6.3	6.3

N/A	MAIN	SR	MAIN	SR
Worst Pair	45-78	36-45	36-78	36-78
ACR-N (dB)	19.2	15.1	58.7	58.6
Freq. (MHz)	3.5	3.6	459.0	491.0
Limit (dB)	60.1	59.8	-19.9	-22.5
Worst Pair	36	36	12	78
PS ACR-N (dB)	18.9	15.1	62.5	59.5
Freq. (MHz)	3.8	3.6	496.0	491.0
Limit (dB)	57.0	57.3	-25.8	-25.4

PASS	MAIN	SR	MAIN	SR
Worst Pair	12	12	78	12
RL (dB)	8.4	7.5	6.3	7.5
Freq. (MHz)	479.0	479.0	455.0	479.0
Limit (dB)	6.0	6.0	6.0	6.0

Compliant Network Standards:
 10BASE-T 100BASE-TX 100BASE-T4
 1000BASE-T 2.5GBASE-T 5GBASE-T
 10GBASE-T ATM-25 ATM-51
 ATM-155 100VG-AnyLan TR-4
 TR-16 Active TR-16 Passive



Cable ID: CAT6A-SLIM-1.5M-3

Date / Time: 08/24/2019 09:24:47 PM

Headroom 9.0 dB (NEXT 12-45)

Test Limit: TIA Cat 6A Channel

Cable Type: Cat 6A U/UTP

NVP: 68.2%

Operator: KINGDATA

Software Version: V6.1 Build 3

Limits Version: V7.1

Calibration Start Date:

Main (Module): 05/11/2018

Remote (Module): 05/11/2018

Test Summary: PASS

Model: DSX-8000

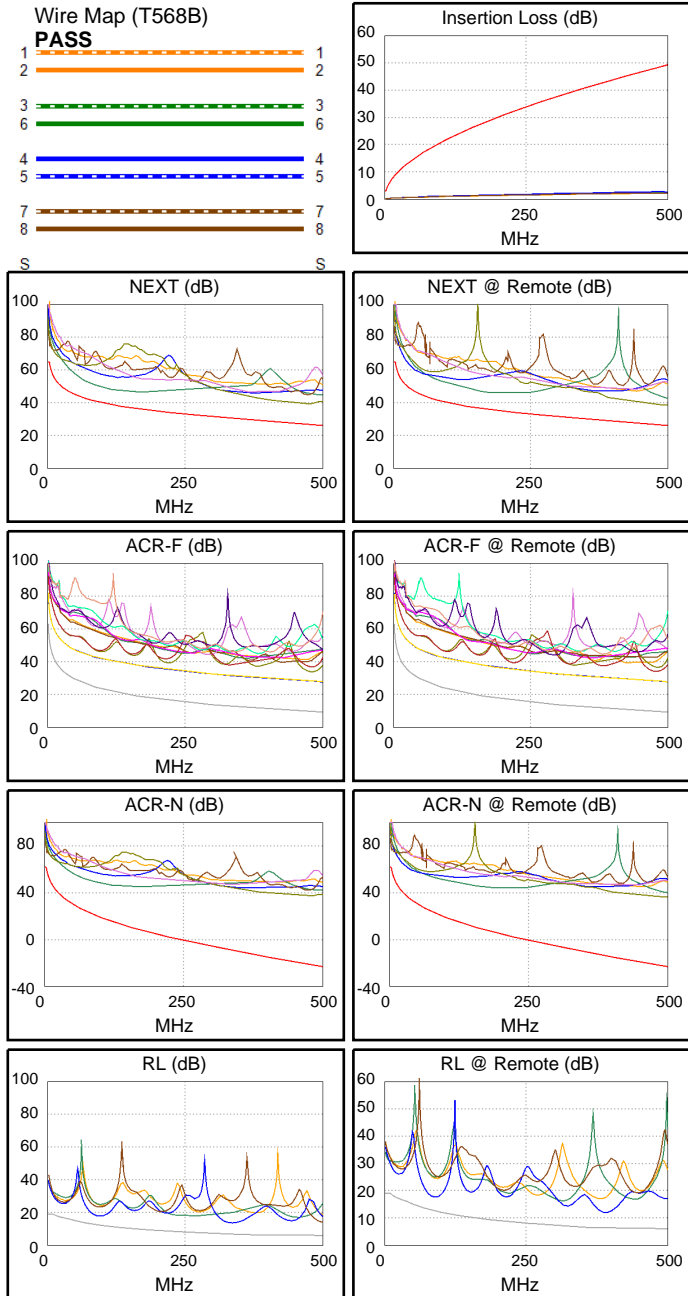
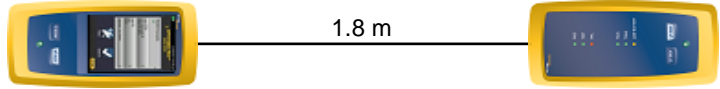
Main S/N: 1747425

Remote S/N: 1747424

Main Adapter: DSX-CHA804

Remote Adapter: DSX-CHA804

Length (m), Limit 100.0	[Pair 12]	1.8
Prop. Delay (ns), Limit 555	[Pair 36]	9
Delay Skew (ns), Limit 50	[Pair 12]	0
Resistance (ohms)	[Pair 45]	2.07
Insertion Loss Margin (dB)	[Pair 45]	45.9
Frequency (MHz)	[Pair 45]	489.0
Limit (dB)	[Pair 45]	48.7



Worst Case Margin Worst Case Value

PASS	MAIN	SR	MAIN	SR
Worst Pair	12-45	12-45	36-78	36-78
NEXT (dB)	9.0	10.5	12.3	12.4
Freq. (MHz)	134.0	182.5	472.0	495.0
Limit (dB)	37.8	35.5	26.8	26.2
Worst Pair	12	12	36	78
PS NEXT (dB)	11.3	12.4	14.2	15.0
Freq. (MHz)	130.5	127.5	475.0	495.0
Limit (dB)	35.1	35.3	23.8	23.3

PASS	MAIN	SR	MAIN	SR
Worst Pair	12-78	12-78	12-78	12-78
ACR-F (dB)	17.6	17.6	18.1	18.2
Freq. (MHz)	40.8	40.8	500.0	500.0
Limit (dB)	31.1	31.1	9.3	9.3
Worst Pair	12	12	78	12
PS ACR-F (dB)	20.5	20.5	21.1	21.2
Freq. (MHz)	40.8	40.8	500.0	500.0
Limit (dB)	28.1	28.1	6.3	6.3

N/A	MAIN	SR	MAIN	SR
Worst Pair	36-45	36-45	36-78	36-78
ACR-N (dB)	15.6	17.0	57.8	58.8
Freq. (MHz)	4.1	2.9	472.0	490.0
Limit (dB)	58.6	61.4	-21.0	-22.4
Worst Pair	36	36	36	36
PS ACR-N (dB)	16.8	19.1	59.5	59.3
Freq. (MHz)	4.1	2.9	475.0	465.0
Limit (dB)	56.1	58.4	-24.1	-23.3

N/A	MAIN	SR	MAIN	SR
Worst Pair	45	45	45	45
RL (dB)	5.4	5.0	6.9	5.8
Freq. (MHz)	92.3	89.3	338.0	393.0
Limit (dB)	12.4	12.5	6.7	6.1

Compliant Network Standards:
 10BASE-T 100BASE-TX 100BASE-T4
 1000BASE-T 2.5GBASE-T 5GBASE-T
 10GBASE-T ATM-25 ATM-51
 ATM-155 100VG-AnyLan TR-4
 TR-16 Active TR-16 Passive



Cable ID: CAT6A-SLIM-1.5M-2

Date / Time: 08/24/2019 09:24:16 PM

Headroom 14.0 dB (NEXT 12-45)

Test Limit: TIA Cat 6A Channel

Cable Type: Cat 6A U/UTP

NVP: 68.2%

Operator: KINGDATA

Software Version: V6.1 Build 3

Limits Version: V7.1

Calibration Start Date:

Main (Module): 05/11/2018

Remote (Module): 05/11/2018

Test Summary: PASS

Model: DSX-8000

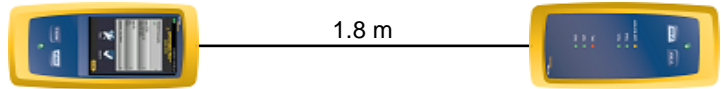
Main S/N: 1747425

Remote S/N: 1747424

Main Adapter: DSX-CHA804

Remote Adapter: DSX-CHA804

Length (m), Limit 100.0	[Pair 12]	1.8
Prop. Delay (ns), Limit 555	[Pair 36]	9
Delay Skew (ns), Limit 50	[Pair 12]	0
Resistance (ohms)	[Pair 45]	2.50
Insertion Loss Margin (dB)	[Pair 45]	45.9
Frequency (MHz)	[Pair 45]	487.0
Limit (dB)	[Pair 45]	48.6

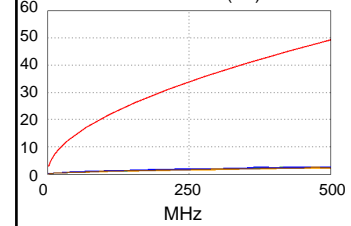


Wire Map (T568B)

PASS

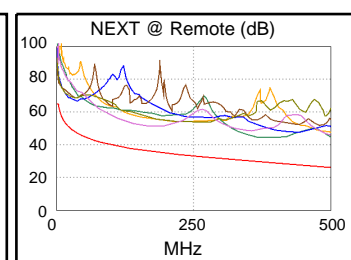
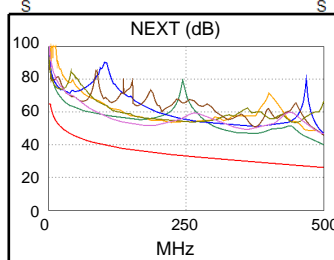


Insertion Loss (dB)

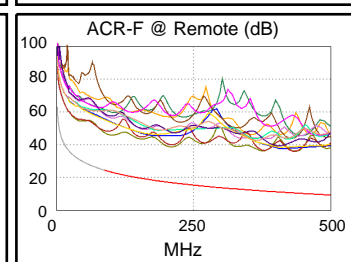
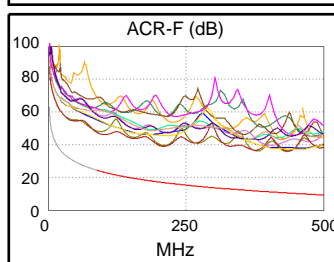


Worst Case Margin Worst Case Value

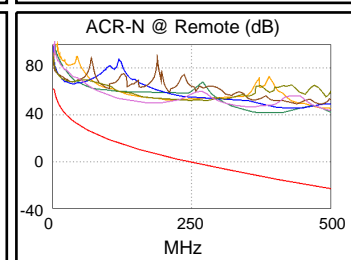
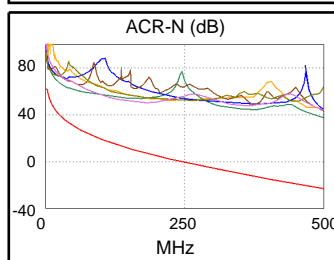
PASS	MAIN	SR	MAIN	SR
Worst Pair	12-45	36-45	12-45	12-45
NEXT (dB)	14.0	14.4	14.0	15.1
Freq. (MHz)	500.0	3.0	500.0	405.0
Limit (dB)	26.1	65.0	26.1	28.6
Worst Pair	12	36	12	45
PS NEXT (dB)	15.2	15.2	15.2	18.8
Freq. (MHz)	500.0	3.8	500.0	500.0
Limit (dB)	23.2	61.0	23.2	23.2



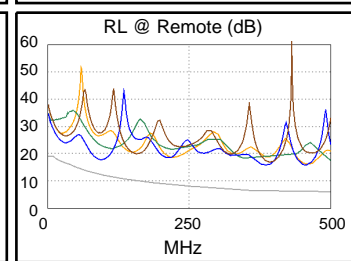
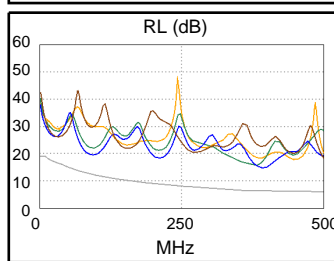
PASS	MAIN	SR	MAIN	SR
Worst Pair	45-36	36-45	36-45	36-45
ACR-F (dB)	22.0	21.6	25.2	25.3
Freq. (MHz)	206.5	206.5	436.0	436.0
Limit (dB)	17.0	17.0	10.5	10.5
Worst Pair	36	45	36	36
PS ACR-F (dB)	24.4	24.3	27.5	27.4
Freq. (MHz)	209.0	206.5	433.0	432.0
Limit (dB)	13.9	14.0	7.5	7.5



N/A	MAIN	SR	MAIN	SR
Worst Pair	36-45	36-45	12-45	12-45
ACR-N (dB)	20.7	17.9	60.9	57.1
Freq. (MHz)	4.5	3.0	500.0	408.0
Limit (dB)	57.8	61.4	-23.2	-15.6
Worst Pair	36	36	45	45
PS ACR-N (dB)	21.5	19.0	62.1	65.7
Freq. (MHz)	4.5	3.3	500.0	500.0
Limit (dB)	55.3	58.2	-26.1	-26.1



N/A	MAIN	SR	MAIN	SR
Worst Pair	45	45	45	45
RL (dB)	7.0	5.4	8.7	9.8
Freq. (MHz)	90.0	94.3	396.0	457.0
Limit (dB)	12.5	12.3	6.0	6.0



Compliant Network Standards:

10BASE-T	100BASE-TX	100BASE-T4
1000BASE-T	2.5GBASE-T	5GBASE-T
10GBASE-T	ATM-25	ATM-51
ATM-155	100VG-AnyLan	TR-4
TR-16 Active	TR-16 Passive	



Cable ID: CAT6A-SLIM-1.5M-1

Date / Time: 08/24/2019 09:23:19 PM

Headroom 13.2 dB (NEXT 36-45)

Test Limit: TIA Cat 6A Channel

Cable Type: Cat 6A U/UTP

NVP: 68.2%

Operator: KINGDATA

Software Version: V6.1 Build 3

Limits Version: V7.1

Calibration Start Date:

Main (Module): 05/11/2018

Remote (Module): 05/11/2018

Test Summary: PASS

Model: DSX-8000

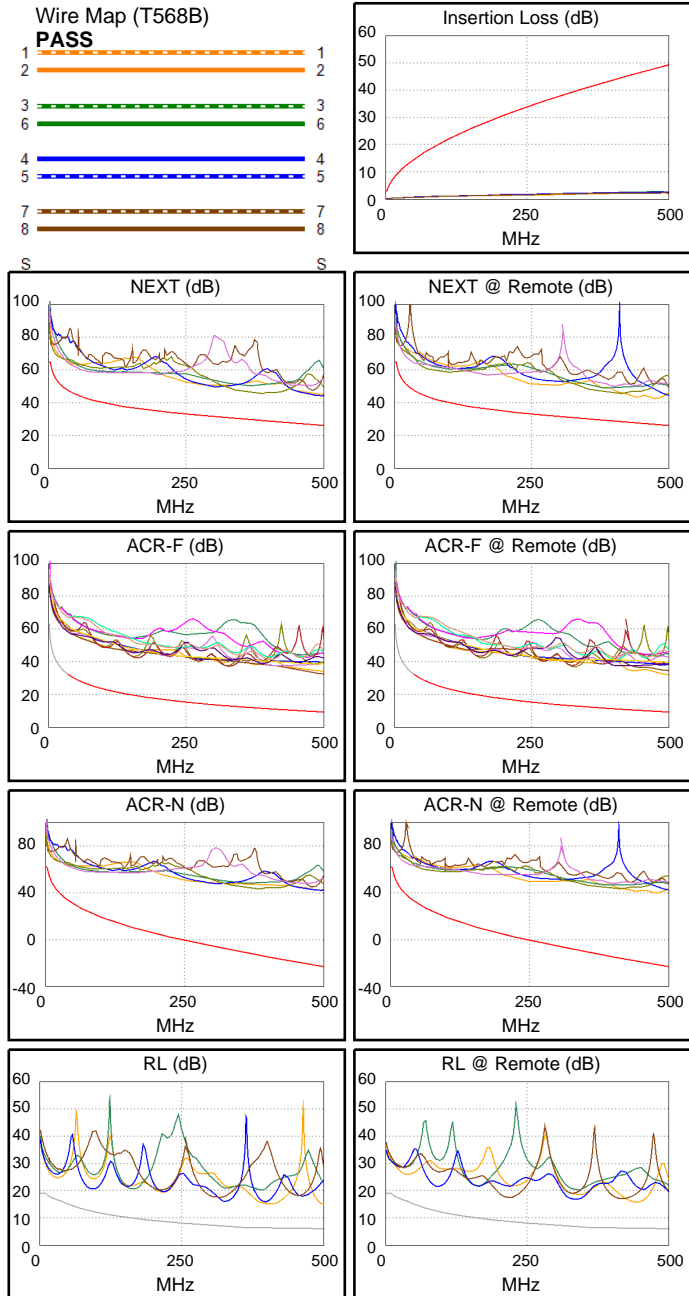
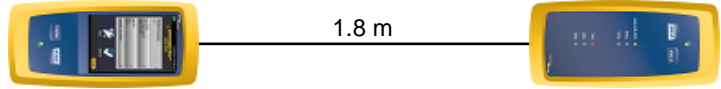
Main S/N: 1747425

Remote S/N: 1747424

Main Adapter: DSX-CHA804

Remote Adapter: DSX-CHA804

Length (m), Limit 100.0	[Pair 12]	1.8
Prop. Delay (ns), Limit 555	[Pair 36]	9
Delay Skew (ns), Limit 50	[Pair 12]	0
Resistance (ohms)	[Pair 45]	2.50
Insertion Loss Margin (dB)	[Pair 36]	46.1
Frequency (MHz)	[Pair 36]	490.0
Limit (dB)	[Pair 36]	48.8



Worst Case Margin Worst Case Value

PASS	MAIN	SR	MAIN	SR
Worst Pair	36-45	36-45	12-78	12-36
NEXT (dB)	13.2	13.4	18.2	15.8
Freq. (MHz)	4.0	3.1	498.0	477.0
Limit (dB)	63.0	64.8	26.1	26.7
Worst Pair	36	36	12	12
PS NEXT (dB)	12.5	13.8	18.5	17.2
Freq. (MHz)	4.5	3.4	500.0	480.0
Limit (dB)	59.7	61.7	23.2	23.7

PASS	MAIN	SR	MAIN	SR
Worst Pair	45-36	12-36	36-12	12-36
ACR-F (dB)	23.2	22.8	23.3	22.8
Freq. (MHz)	160.0	498.0	500.0	498.0
Limit (dB)	19.2	9.3	9.3	9.3
Worst Pair	36	36	12	36
PS ACR-F (dB)	23.4	23.7	25.1	24.2
Freq. (MHz)	155.0	153.0	500.0	498.0
Limit (dB)	16.5	16.6	6.3	6.3

N/A	MAIN	SR	MAIN	SR
Worst Pair	36-45	36-45	12-78	12-36
ACR-N (dB)	17.2	17.0	65.0	61.2
Freq. (MHz)	4.0	3.1	496.0	477.0
Limit (dB)	58.9	61.1	-22.9	-21.4
Worst Pair	36	36	12	12
PS ACR-N (dB)	16.4	17.5	65.2	63.0
Freq. (MHz)	3.8	3.4	495.0	480.0
Limit (dB)	57.0	57.9	-25.7	-24.5

N/A	MAIN	SR	MAIN	SR
Worst Pair	12	78	12	12
RL (dB)	8.0	8.7	8.8	9.7
Freq. (MHz)	29.5	216.0	500.0	445.0
Limit (dB)	16.7	8.7	6.0	6.0

Compliant Network Standards:
 10BASE-T 100BASE-TX 100BASE-T4
 1000BASE-T 2.5GBASE-T 5GBASE-T
 10GBASE-T ATM-25 ATM-51
 ATM-155 100VG-AnyLan TR-4
 TR-16 Active TR-16 Passive



Cable ID: CAT6A-SLIM-1M-5

Date / Time: 08/24/2019 09:21:23 PM

Headroom 15.7 dB (NEXT 36-45)

Test Limit: TIA Cat 6A Channel

Cable Type: Cat 6A U/UTP

NVP: 68.2%

Operator: KINGDATA

Software Version: V6.1 Build 3

Limits Version: V7.1

Calibration Start Date:

Main (Module): 05/11/2018

Remote (Module): 05/11/2018

Test Summary: PASS

Model: DSX-8000

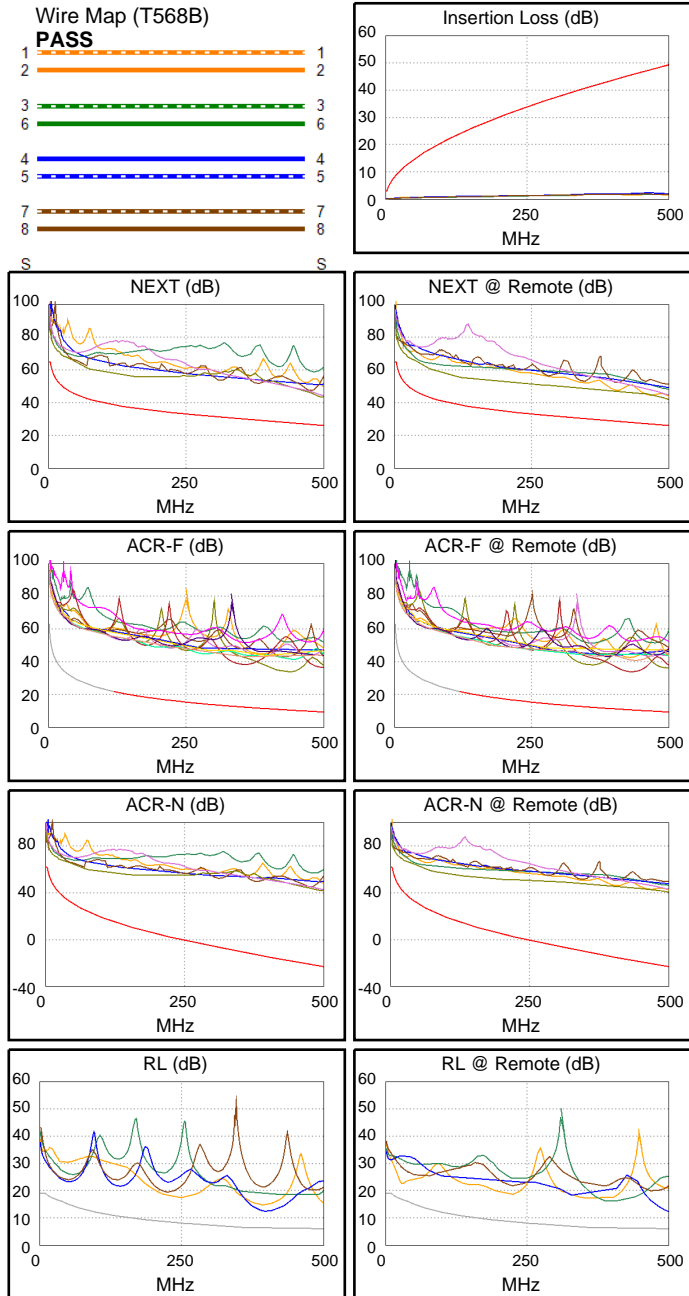
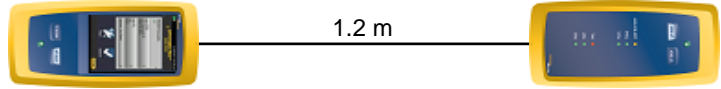
Main S/N: 1747425

Remote S/N: 1747424

Main Adapter: DSX-CHA804

Remote Adapter: DSX-CHA804

Length (m), Limit 100.0	[Pair 12]	1.2
Prop. Delay (ns), Limit 555	[Pair 36]	6
Delay Skew (ns), Limit 50	[Pair 12]	0
Resistance (ohms)	[Pair 45]	2.48
Insertion Loss Margin (dB)	[Pair 45]	45.9
Frequency (MHz)	[Pair 45]	477.0
Limit (dB)	[Pair 45]	48.1



Worst Case Margin Worst Case Value

PASS	MAIN	SR	MAIN	SR
Worst Pair	36-78	36-45	36-78	36-78
NEXT (dB)	17.2	15.7	17.2	16.0
Freq. (MHz)	500.0	2.9	500.0	500.0
Limit (dB)	26.1	65.0	26.1	26.1
Worst Pair	78	36	78	36
PS NEXT (dB)	17.1	15.5	17.2	16.4
Freq. (MHz)	499.0	3.6	500.0	500.0
Limit (dB)	23.3	61.2	23.2	23.2

PASS	MAIN	SR	MAIN	SR
Worst Pair	36-45	45-36	36-45	45-36
ACR-F (dB)	23.1	23.3	23.1	23.3
Freq. (MHz)	434.0	434.0	434.0	434.0
Limit (dB)	10.5	10.5	10.5	10.5
Worst Pair	45	36	45	36
PS ACR-F (dB)	25.1	25.6	25.2	25.7
Freq. (MHz)	436.0	426.0	438.0	434.0
Limit (dB)	7.5	7.7	7.4	7.5

N/A	MAIN	SR	MAIN	SR
Worst Pair	36-78	36-45	36-78	36-78
ACR-N (dB)	21.4	19.2	64.9	63.7
Freq. (MHz)	2.9	2.9	500.0	500.0
Limit (dB)	61.4	61.4	-23.2	-23.2
Worst Pair	36	36	78	36
PS ACR-N (dB)	22.1	19.4	64.9	64.0
Freq. (MHz)	4.8	3.6	500.0	500.0
Limit (dB)	54.8	57.3	-26.1	-26.1

N/A	MAIN	SR	MAIN	SR
Worst Pair	45	12	45	45
RL (dB)	6.3	5.8	6.3	6.3
Freq. (MHz)	401.0	28.1	401.0	500.0
Limit (dB)	6.0	16.8	6.0	6.0

Compliant Network Standards:
 10BASE-T 100BASE-TX 100BASE-T4
 1000BASE-T 2.5GBASE-T 5GBASE-T
 10GBASE-T ATM-25 ATM-51
 ATM-155 100VG-AnyLan TR-4
 TR-16 Active TR-16 Passive



Cable ID: CAT6A-SLIM-1M-4

Date / Time: 08/24/2019 09:20:47 PM

Headroom 15.4 dB (NEXT 36-45)

Test Limit: TIA Cat 6A Channel

Cable Type: Cat 6A U/UTP

NVP: 68.2%

Operator: KINGDATA

Software Version: V6.1 Build 3

Limits Version: V7.1

Calibration Start Date:

Main (Module): 05/11/2018

Remote (Module): 05/11/2018

Test Summary: PASS

Model: DSX-8000

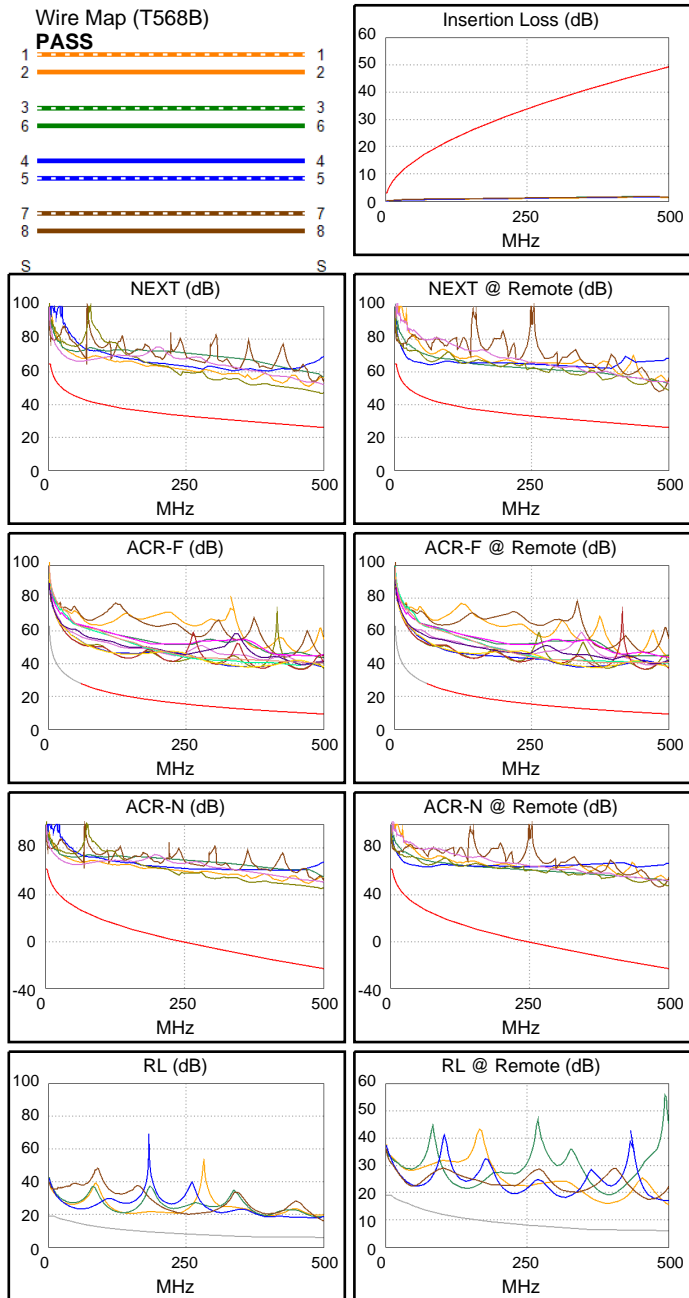
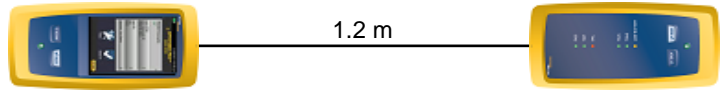
Main S/N: 1747425

Remote S/N: 1747424

Main Adapter: DSX-CHA804

Remote Adapter: DSX-CHA804

Length (m), Limit 100.0	[Pair 12]	1.2
Prop. Delay (ns), Limit 555	[Pair 36]	6
Delay Skew (ns), Limit 50	[Pair 12]	0
Resistance (ohms)	[Pair 78]	2.26
Insertion Loss Margin (dB)	[Pair 36]	44.3
Frequency (MHz)	[Pair 36]	440.0
Limit (dB)	[Pair 36]	46.0



Worst Case Margin Worst Case Value

PASS	MAIN	SR	MAIN	SR
Worst Pair	36-45	36-45	36-78	36-45
NEXT (dB)	15.4	15.4	20.7	21.5
Freq. (MHz)	3.9	3.1	494.0	485.0
Limit (dB)	63.3	64.8	26.2	26.5
Worst Pair	45	36	36	36
PS NEXT (dB)	17.0	17.0	22.2	22.7
Freq. (MHz)	3.9	3.8	483.0	490.0
Limit (dB)	60.8	61.0	23.6	23.5

PASS	MAIN	SR	MAIN	SR
Worst Pair	36-45	45-36	45-36	36-45
ACR-F (dB)	23.0	23.0	26.4	26.5
Freq. (MHz)	138.0	141.0	461.0	461.0
Limit (dB)	20.5	20.3	10.0	10.0
Worst Pair	36	36	36	45
PS ACR-F (dB)	25.3	25.1	27.3	27.3
Freq. (MHz)	141.0	141.0	460.0	461.0
Limit (dB)	17.3	17.3	7.0	7.0

N/A	MAIN	SR	MAIN	SR
Worst Pair	36-45	36-45	36-78	36-45
ACR-N (dB)	19.5	19.1	68.1	68.7
Freq. (MHz)	3.9	3.1	494.0	486.0
Limit (dB)	59.2	61.1	-22.7	-22.1
Worst Pair	45	36	36	36
PS ACR-N (dB)	21.1	20.7	70.4	70.2
Freq. (MHz)	3.9	3.1	500.0	491.0
Limit (dB)	56.7	58.3	-26.1	-25.4

N/A	MAIN	SR	MAIN	SR
Worst Pair	45	78	78	12
RL (dB)	8.6	6.9	10.1	9.5
Freq. (MHz)	49.5	44.0	500.0	500.0
Limit (dB)	15.1	15.6	6.0	6.0

Compliant Network Standards:
 10BASE-T 100BASE-TX 100BASE-T4
 1000BASE-T 2.5GBASE-T 5GBASE-T
 10GBASE-T ATM-25 ATM-51
 ATM-155 100VG-AnyLan TR-4
 TR-16 Active TR-16 Passive



Cable ID: CAT6A-SLIM-1M-3

Date / Time: 08/24/2019 09:20:19 PM

Headroom 15.9 dB (NEXT 12-36)

Test Limit: TIA Cat 6A Channel

Cable Type: Cat 6A U/UTP

NVP: 68.2%

Operator: KINGDATA

Software Version: V6.1 Build 3

Limits Version: V7.1

Calibration Start Date:

Main (Module): 05/11/2018

Remote (Module): 05/11/2018

Test Summary: PASS

Model: DSX-8000

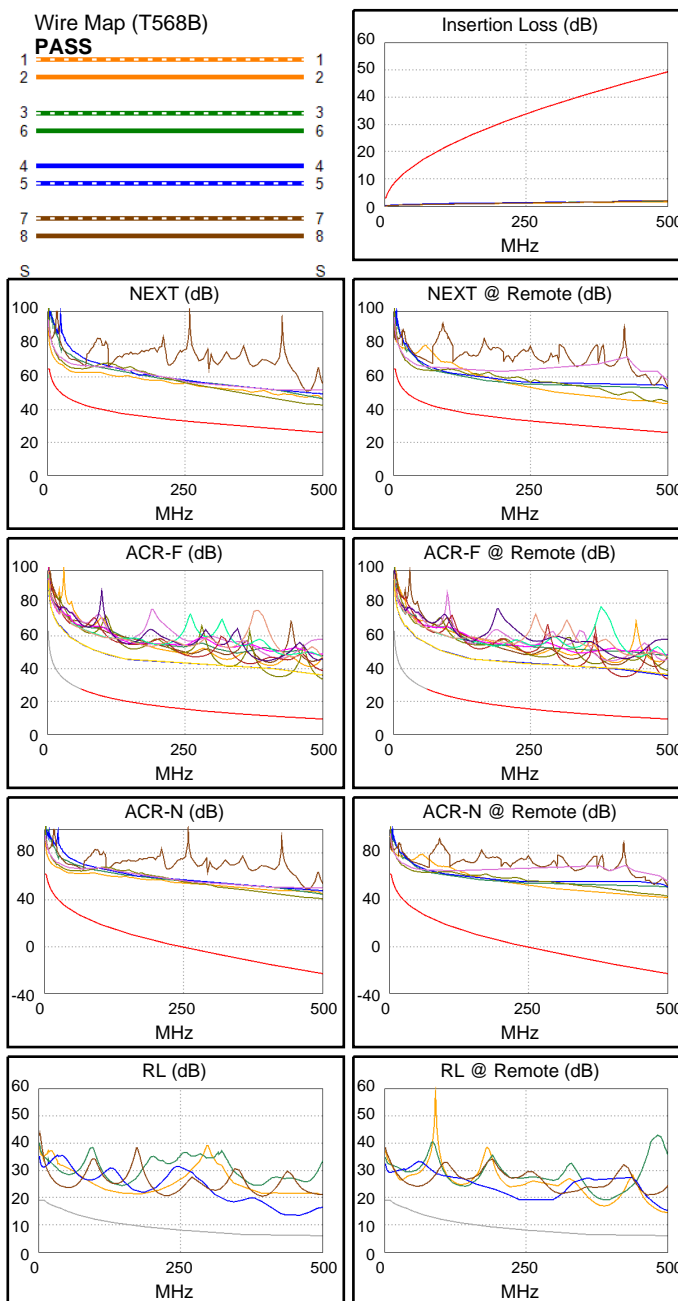
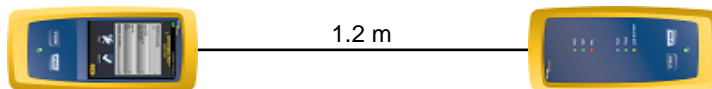
Main S/N: 1747425

Remote S/N: 1747424

Main Adapter: DSX-CHA804

Remote Adapter: DSX-CHA804

Length (m), Limit 100.0	[Pair 12]	1.2
Prop. Delay (ns), Limit 555	[Pair 36]	6
Delay Skew (ns), Limit 50	[Pair 12]	0
Resistance (ohms)	[Pair 45]	3.42
Insertion Loss Margin (dB)	[Pair 45]	44.3
Frequency (MHz)	[Pair 45]	446.0
Limit (dB)	[Pair 45]	46.3



Worst Case Margin Worst Case Value

PASS	MAIN	SR	MAIN	SR
Worst Pair	12-36	12-36	36-78	12-36
NEXT (dB)	15.9	17.5	16.5	17.7
Freq. (MHz)	4.1	493.0	500.0	499.0
Limit (dB)	62.8	26.3	26.1	26.1
Worst Pair	36	36	36	36
PS NEXT (dB)	16.3	17.8	17.8	17.8
Freq. (MHz)	4.3	499.0	500.0	499.0
Limit (dB)	60.1	23.3	23.2	23.3

PASS	MAIN	SR	MAIN	SR
Worst Pair	36-45	45-36	36-45	45-36
ACR-F (dB)	24.3	24.4	24.3	24.4
Freq. (MHz)	500.0	500.0	500.0	500.0
Limit (dB)	9.3	9.3	9.3	9.3
Worst Pair	45	36	45	36
PS ACR-F (dB)	27.0	26.6	27.0	27.2
Freq. (MHz)	500.0	416.0	500.0	500.0
Limit (dB)	6.3	7.9	6.3	6.3

N/A	MAIN	SR	MAIN	SR
Worst Pair	12-36	36-45	36-78	12-36
ACR-N (dB)	20.0	21.4	63.9	65.1
Freq. (MHz)	4.1	3.0	500.0	499.0
Limit (dB)	58.6	61.4	-23.2	-23.1
Worst Pair	36	36	36	36
PS ACR-N (dB)	20.5	22.2	65.3	65.3
Freq. (MHz)	4.3	3.5	500.0	499.0
Limit (dB)	55.8	57.6	-26.1	-26.0

N/A	MAIN	SR	MAIN	SR
Worst Pair	45	12	45	12
RL (dB)	7.4	8.5	7.4	8.5
Freq. (MHz)	459.0	500.0	459.0	500.0
Limit (dB)	6.0	6.0	6.0	6.0

Compliant Network Standards:
 10BASE-T 100BASE-TX 100BASE-T4
 1000BASE-T 2.5GBASE-T 5GBASE-T
 10GBASE-T ATM-25 ATM-51
 ATM-155 100VG-AnyLan TR-4
 TR-16 Active TR-16 Passive



Cable ID: CAT6A-SLIM-1M-2

Date / Time: 08/24/2019 09:19:57 PM

Headroom 11.2 dB (NEXT 36-78)

Test Limit: TIA Cat 6A Channel

Cable Type: Cat 6A U/UTP

NVP: 68.2%

Operator: KINGDATA

Software Version: V6.1 Build 3

Limits Version: V7.1

Calibration Start Date:

Main (Module): 05/11/2018

Remote (Module): 05/11/2018

Test Summary: PASS

Model: DSX-8000

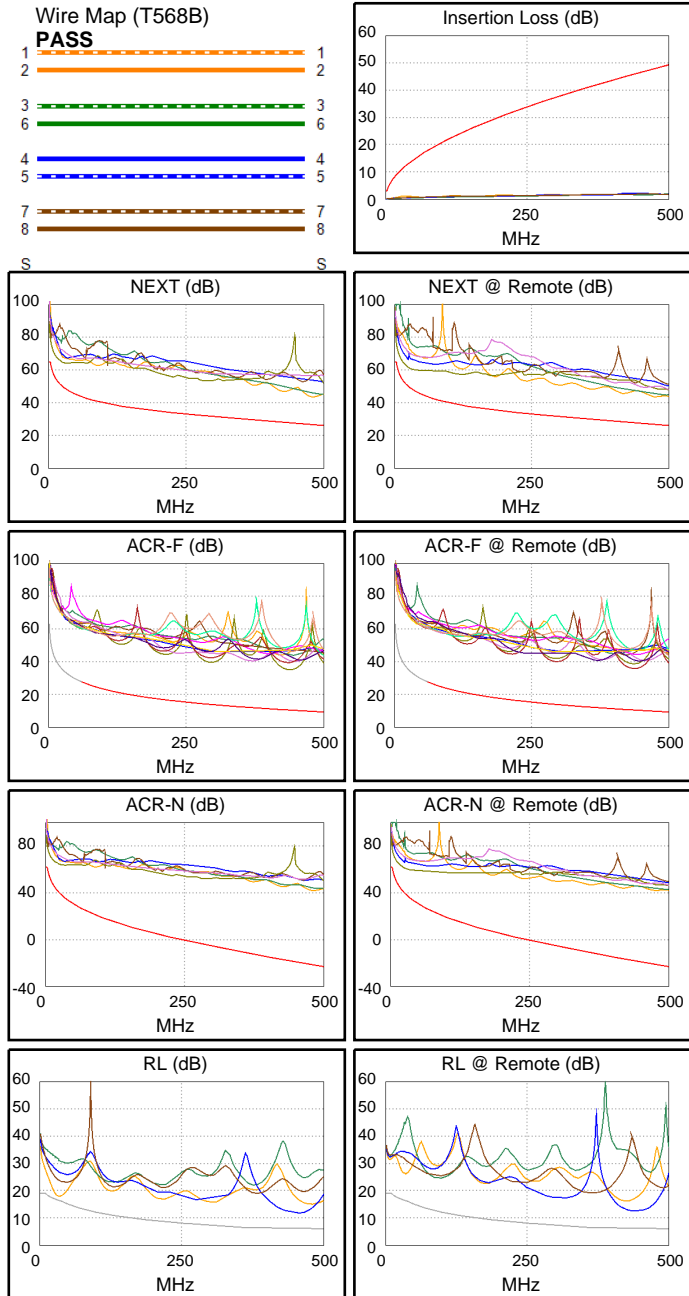
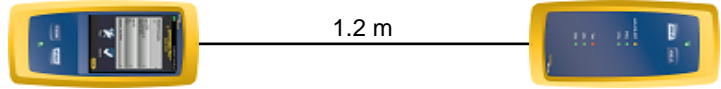
Main S/N: 1747425

Remote S/N: 1747424

Main Adapter: DSX-CHA804

Remote Adapter: DSX-CHA804

Length (m), Limit 100.0	[Pair 12]	1.2
Prop. Delay (ns), Limit 555	[Pair 12]	6
Delay Skew (ns), Limit 50	[Pair 12]	0
Resistance (ohms)	[Pair 12]	2.27
Insertion Loss Margin (dB)	[Pair 45]	44.0
Frequency (MHz)	[Pair 45]	446.0
Limit (dB)	[Pair 45]	46.3



Worst Case Margin Worst Case Value

PASS	MAIN	SR	MAIN	SR
Worst Pair	36-78	36-78	12-36	12-36
NEXT (dB)	13.6	11.2	16.9	16.8
Freq. (MHz)	10.9	15.5	483.0	476.0
Limit (dB)	56.0	53.5	26.5	26.7
Worst Pair	36	78	12	12
PS NEXT (dB)	14.7	12.5	17.5	17.6
Freq. (MHz)	4.6	24.9	486.0	500.0
Limit (dB)	59.5	47.4	23.6	23.2

PASS	MAIN	SR	MAIN	SR
Worst Pair	36-45	45-36	36-45	45-36
ACR-F (dB)	24.6	25.3	24.6	25.3
Freq. (MHz)	439.0	437.0	439.0	437.0
Limit (dB)	10.4	10.4	10.4	10.4
Worst Pair	45	36	45	36
PS ACR-F (dB)	26.8	26.9	26.8	27.0
Freq. (MHz)	439.0	439.0	439.0	442.0
Limit (dB)	7.4	7.4	7.4	7.3

N/A	MAIN	SR	MAIN	SR
Worst Pair	36-78	36-78	12-36	12-36
ACR-N (dB)	18.1	14.9	63.6	65.2
Freq. (MHz)	3.3	3.1	483.0	500.0
Limit (dB)	60.7	61.1	-21.9	-23.2
Worst Pair	36	36	12	12
PS ACR-N (dB)	18.9	16.5	64.4	65.1
Freq. (MHz)	4.3	3.5	486.0	500.0
Limit (dB)	55.8	57.6	-25.0	-26.1

N/A	MAIN	SR	MAIN	SR
Worst Pair	12	45	45	45
RL (dB)	1.5	6.5	5.7	6.5
Freq. (MHz)	33.8	444.0	459.0	444.0
Limit (dB)	16.4	6.0	6.0	6.0

Compliant Network Standards:
 10BASE-T 100BASE-TX 100BASE-T4
 1000BASE-T 2.5GBASE-T 5GBASE-T
 10GBASE-T ATM-25 ATM-51
 ATM-155 100VG-AnyLan TR-4
 TR-16 Active TR-16 Passive



Cable ID: CAT6A-SLIM-1M-1

Date / Time: 08/24/2019 09:19:22 PM

Headroom 14.6 dB (NEXT 36-45)

Test Limit: TIA Cat 6A Channel

Cable Type: Cat 6A U/UTP

NVP: 68.2%

Operator: KINGDATA

Software Version: V6.1 Build 3

Limits Version: V7.1

Calibration Start Date:

Main (Module): 05/11/2018

Remote (Module): 05/11/2018

Test Summary: PASS

Model: DSX-8000

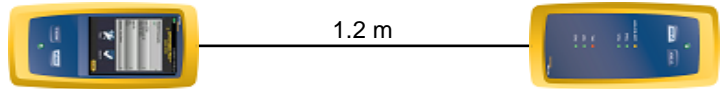
Main S/N: 1747425

Remote S/N: 1747424

Main Adapter: DSX-CHA804

Remote Adapter: DSX-CHA804

Length (m), Limit 100.0	[Pair 12]	1.2
Prop. Delay (ns), Limit 555	[Pair 36]	6
Delay Skew (ns), Limit 50	[Pair 12]	0
Resistance (ohms)	[Pair 45]	3.65
Insertion Loss Margin (dB)	[Pair 36]	47.3
Frequency (MHz)	[Pair 36]	500.0
Limit (dB)	[Pair 36]	49.3

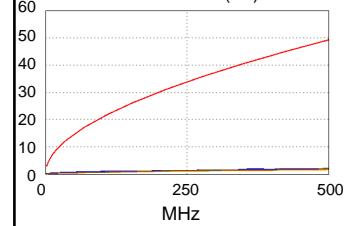


Wire Map (T568B)

PASS

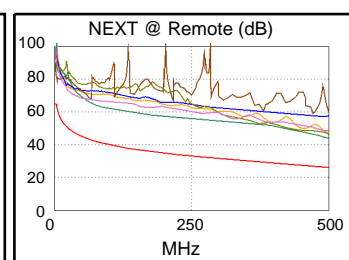
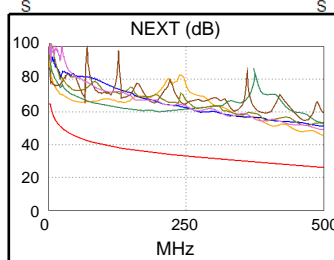


Insertion Loss (dB)

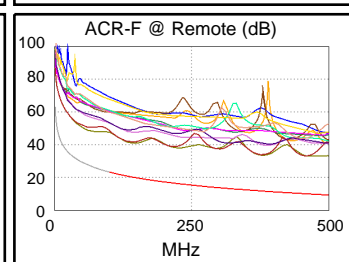
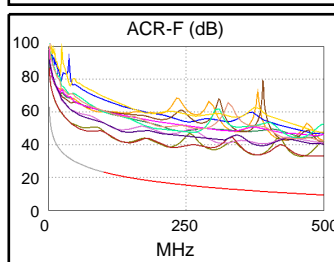


Worst Case Margin Worst Case Value

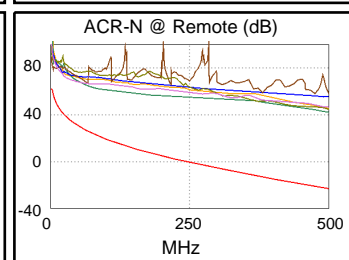
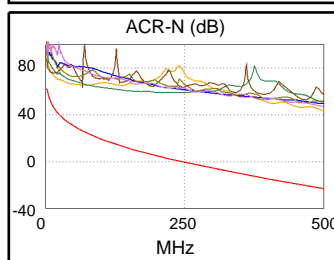
PASS	MAIN	SR	MAIN	SR
Worst Pair	36-45	36-45	12-36	12-45
NEXT (dB)	14.6	16.4	19.4	17.9
Freq. (MHz)	4.6	3.3	500.0	500.0
Limit (dB)	62.0	64.5	26.1	26.1
Worst Pair	36	36	12	12
PS NEXT (dB)	16.0	18.2	20.8	19.0
Freq. (MHz)	4.6	3.3	500.0	500.0
Limit (dB)	59.5	62.0	23.2	23.2



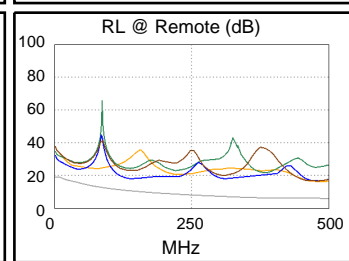
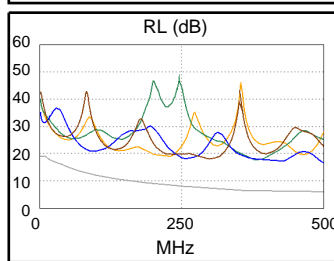
PASS	MAIN	SR	MAIN	SR
Worst Pair	36-45	36-45	36-45	36-45
ACR-F (dB)	21.0	20.7	22.8	23.1
Freq. (MHz)	136.5	141.0	459.0	475.0
Limit (dB)	20.6	20.3	10.0	9.7
Worst Pair	36	36	36	45
PS ACR-F (dB)	23.0	23.4	25.7	25.4
Freq. (MHz)	141.0	136.5	500.0	467.0
Limit (dB)	17.3	17.6	6.3	6.9



N/A	MAIN	SR	MAIN	SR
Worst Pair	36-45	36-45	12-36	12-45
ACR-N (dB)	18.5	19.9	66.7	65.3
Freq. (MHz)	4.0	2.9	500.0	500.0
Limit (dB)	58.9	61.4	-23.2	-23.2
Worst Pair	36	36	12	12
PS ACR-N (dB)	20.0	21.9	68.5	66.7
Freq. (MHz)	4.0	3.3	500.0	500.0
Limit (dB)	56.4	58.2	-26.1	-26.1



N/A	MAIN	SR	MAIN	SR
Worst Pair	45	45	45	12
RL (dB)	8.4	7.4	10.6	10.1
Freq. (MHz)	92.3	142.5	500.0	482.0
Limit (dB)	12.4	10.5	6.0	6.0



Compliant Network Standards:

10BASE-T	100BASE-TX	100BASE-T4
1000BASE-T	2.5GBASE-T	5GBASE-T
10GBASE-T	ATM-25	ATM-51
ATM-155	100VG-AnyLan	TR-4
TR-16 Active	TR-16 Passive	



Cable ID: CAT6A-SLIM-0.5M-5

Date / Time: 08/24/2019 09:18:36 PM

Headroom 15.2 dB (NEXT 36-45)

Test Limit: TIA Cat 6A Channel

Cable Type: Cat 6A U/UTP

NVP: 68.2%

Operator: KINGDATA

Software Version: V6.1 Build 3

Limits Version: V7.1

Calibration Start Date:

Main (Module): 05/11/2018

Remote (Module): 05/11/2018

Test Summary: PASS

Model: DSX-8000

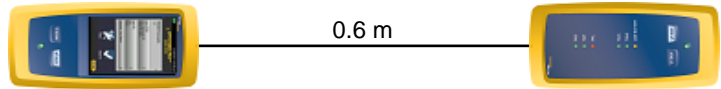
Main S/N: 1747425

Remote S/N: 1747424

Main Adapter: DSX-CHA804

Remote Adapter: DSX-CHA804

Length (m), Limit 100.0	[Pair 36]	0.6
Prop. Delay (ns), Limit 555	[Pair 12]	4
Delay Skew (ns), Limit 50	[Pair 12]	1
Resistance (ohms)	[Pair 45]	1.11
Insertion Loss Margin (dB)	[Pair 12]	16.2
Frequency (MHz)	[Pair 12]	71.0
Limit (dB)	[Pair 12]	17.5

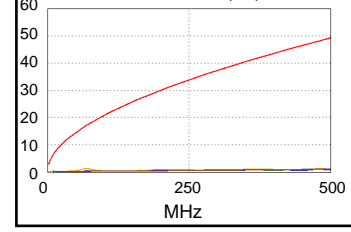


Wire Map (T568B)

PASS

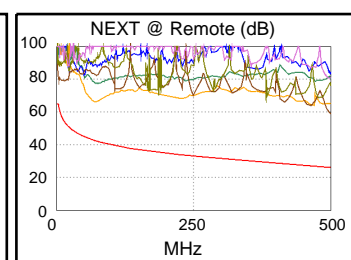
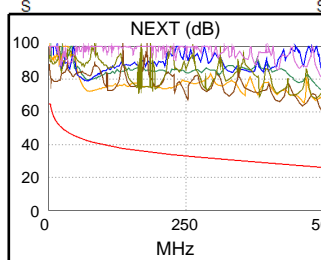


Insertion Loss (dB)

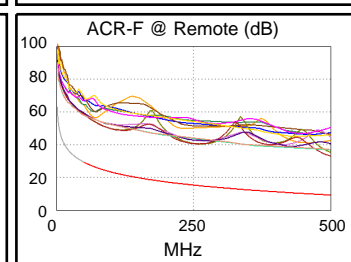
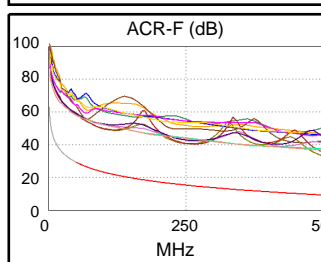


Worst Case Margin Worst Case Value

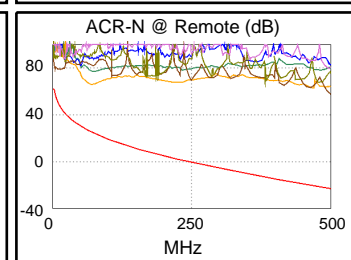
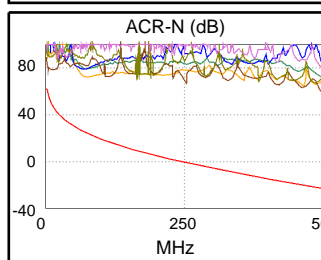
PASS	MAIN	SR	MAIN	SR
Worst Pair	36-45	36-45	36-45	36-45
NEXT (dB)	15.2	16.3	33.0	32.5
Freq. (MHz)	4.3	4.3	500.0	500.0
Limit (dB)	62.6	62.6	26.1	26.1
Worst Pair	36	36	36	36
PS NEXT (dB)	17.4	18.3	35.5	34.5
Freq. (MHz)	4.3	4.3	500.0	500.0
Limit (dB)	60.1	60.1	23.2	23.2



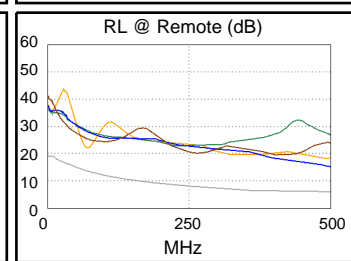
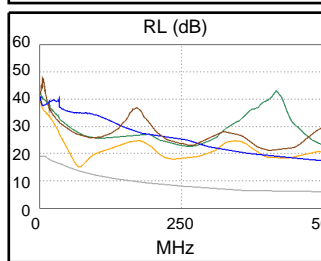
PASS	MAIN	SR	MAIN	SR
Worst Pair	36-45	45-36	36-45	45-36
ACR-F (dB)	23.7	23.8	23.7	23.8
Freq. (MHz)	500.0	500.0	500.0	500.0
Limit (dB)	9.3	9.3	9.3	9.3
Worst Pair	45	36	45	36
PS ACR-F (dB)	25.0	25.7	25.0	25.7
Freq. (MHz)	500.0	500.0	500.0	500.0
Limit (dB)	6.3	6.3	6.3	6.3



N/A	MAIN	SR	MAIN	SR
Worst Pair	36-45	36-45	36-45	36-45
ACR-N (dB)	19.5	20.1	81.2	80.7
Freq. (MHz)	4.3	2.6	500.0	500.0
Limit (dB)	58.3	61.6	-23.2	-23.2
Worst Pair	36	36	36	36
PS ACR-N (dB)	21.6	22.4	83.8	82.8
Freq. (MHz)	3.8	3.9	500.0	500.0
Limit (dB)	57.0	56.7	-26.1	-26.1



N/A	MAIN	SR	MAIN	SR
Worst Pair	12	12	12	45
RL (dB)	1.5	8.4	1.6	9.1
Freq. (MHz)	69.8	69.8	71.5	500.0
Limit (dB)	13.6	13.6	13.5	6.0



Compliant Network Standards:

10BASE-T	100BASE-TX	100BASE-T4
1000BASE-T	2.5GBASE-T	5GBASE-T
10GBASE-T	ATM-25	ATM-51
ATM-155	100VG-AnyLan	TR-4
TR-16 Active	TR-16 Passive	



Cable ID: CAT6A-SLIM-0.5M-4

Date / Time: 08/24/2019 09:18:17 PM

Headroom 15.6 dB (NEXT 36-45)

Test Limit: TIA Cat 6A Channel

Cable Type: Cat 6A U/UTP

NVP: 68.2%

Operator: KINGDATA

Software Version: V6.1 Build 3

Limits Version: V7.1

Calibration Start Date:

Main (Module): 05/11/2018

Remote (Module): 05/11/2018

Test Summary: PASS

Model: DSX-8000

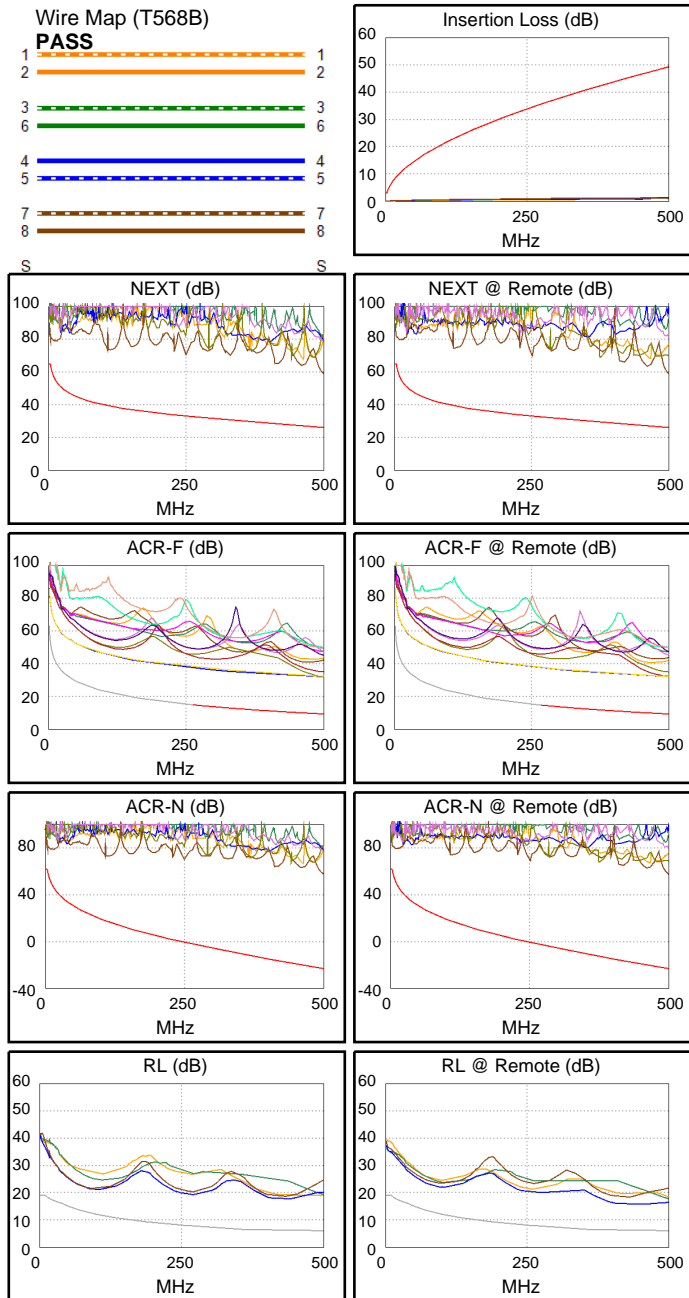
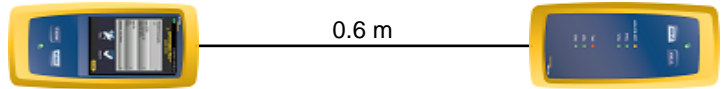
Main S/N: 1747425

Remote S/N: 1747424

Main Adapter: DSX-CHA804

Remote Adapter: DSX-CHA804

Length (m), Limit 100.0	[Pair 12]	0.6
Prop. Delay (ns), Limit 555	[Pair 36]	3
Delay Skew (ns), Limit 50	[Pair 12]	0
Resistance (ohms)	[Pair 78]	1.20
Insertion Loss Margin (dB)	[Pair 36]	47.8
Frequency (MHz)	[Pair 36]	495.0
Limit (dB)	[Pair 36]	49.0



Worst Case Margin Worst Case Value

PASS	MAIN	SR	MAIN	SR
Worst Pair	36-45	36-45	36-45	36-45
NEXT (dB)	15.6	16.7	33.0	32.6
Freq. (MHz)	4.6	3.6	500.0	500.0
Limit (dB)	62.0	63.7	26.1	26.1
Worst Pair	36	36	36	36
PS NEXT (dB)	17.9	18.7	35.9	35.1
Freq. (MHz)	4.6	3.6	500.0	500.0
Limit (dB)	59.5	61.2	23.2	23.2

PASS	MAIN	SR	MAIN	SR
Worst Pair	12-78	12-78	12-78	12-78
ACR-F (dB)	22.1	22.3	22.7	22.8
Freq. (MHz)	447.0	447.0	500.0	500.0
Limit (dB)	10.3	10.3	9.3	9.3
Worst Pair	12	12	12	36
PS ACR-F (dB)	25.0	25.1	25.4	25.4
Freq. (MHz)	466.0	447.0	496.0	500.0
Limit (dB)	6.9	7.3	6.3	6.3

N/A	MAIN	SR	MAIN	SR
Worst Pair	36-45	36-45	36-45	36-45
ACR-N (dB)	19.8	20.3	81.2	80.8
Freq. (MHz)	3.8	2.8	500.0	500.0
Limit (dB)	59.5	61.5	-23.2	-23.2
Worst Pair	36	36	36	36
PS ACR-N (dB)	21.9	22.6	84.1	83.3
Freq. (MHz)	3.3	3.6	500.0	500.0
Limit (dB)	58.2	57.3	-26.1	-26.1

N/A	MAIN	SR	MAIN	SR
Worst Pair	45	45	45	45
RL (dB)	8.8	9.4	11.6	9.4
Freq. (MHz)	90.0	445.0	436.0	445.0
Limit (dB)	12.5	6.0	6.0	6.0

Compliant Network Standards:
 10BASE-T 100BASE-TX 100BASE-T4
 1000BASE-T 2.5GBASE-T 5GBASE-T
 10GBASE-T ATM-25 ATM-51
 ATM-155 100VG-AnyLan TR-4
 TR-16 Active TR-16 Passive



Cable ID: CAT6A-SLIM-0.5M-3

Date / Time: 08/24/2019 09:17:57 PM

Headroom 17.2 dB (NEXT 36-45)

Test Limit: TIA Cat 6A Channel

Cable Type: Cat 6A U/UTP

NVP: 68.2%

Operator: KINGDATA

Software Version: V6.1 Build 3

Limits Version: V7.1

Calibration Start Date:

Main (Module): 05/11/2018

Remote (Module): 05/11/2018

Test Summary: PASS

Model: DSX-8000

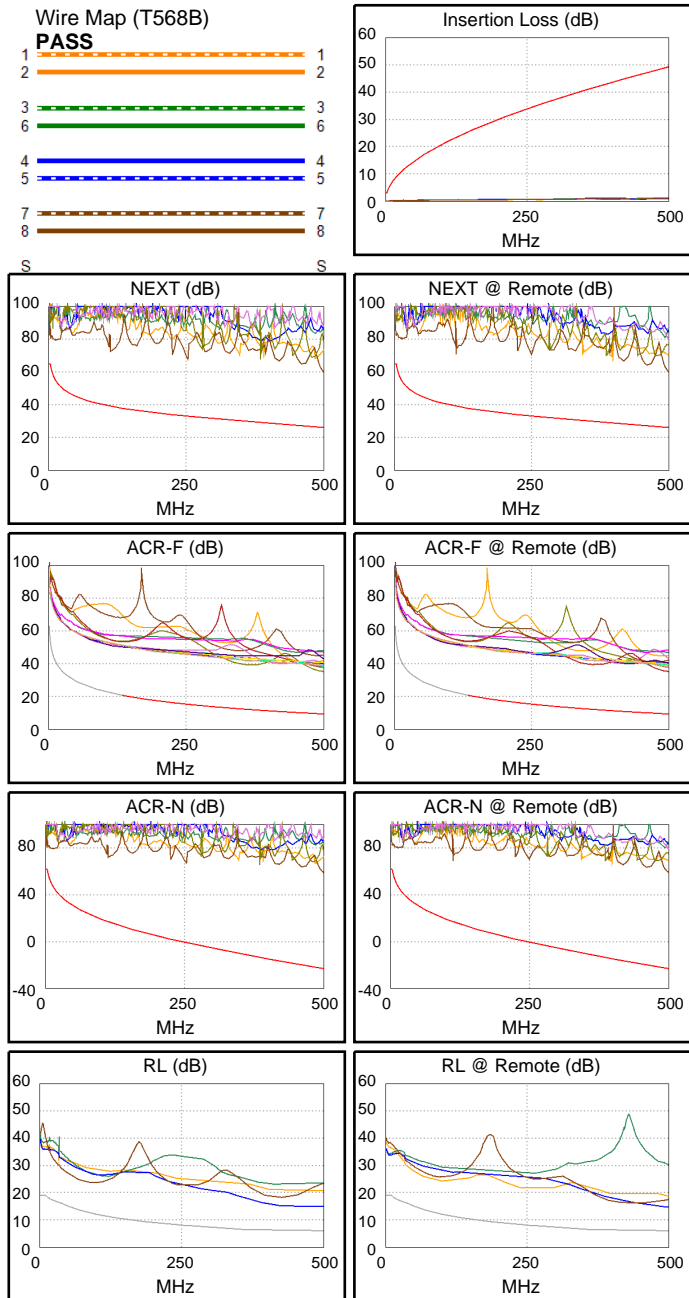
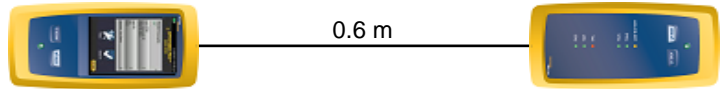
Main S/N: 1747425

Remote S/N: 1747424

Main Adapter: DSX-CHA804

Remote Adapter: DSX-CHA804

Length (m), Limit 100.0	[Pair 12]	0.6
Prop. Delay (ns), Limit 555	[Pair 36]	3
Delay Skew (ns), Limit 50	[Pair 12]	0
Resistance (ohms)	[Pair 45]	1.60
Insertion Loss Margin (dB)	[Pair 36]	47.8
Frequency (MHz)	[Pair 36]	493.0
Limit (dB)	[Pair 36]	48.9



Worst Case Margin Worst Case Value

PASS	MAIN	SR	MAIN	SR
Worst Pair	36-45	36-45	36-45	36-45
NEXT (dB)	18.1	17.2	34.1	33.7
Freq. (MHz)	4.0	3.1	500.0	500.0
Limit (dB)	63.0	64.8	26.1	26.1
Worst Pair	36	36	36	36
PS NEXT (dB)	20.0	19.3	36.7	36.2
Freq. (MHz)	4.0	3.4	500.0	500.0
Limit (dB)	60.5	61.7	23.2	23.2

PASS	MAIN	SR	MAIN	SR
Worst Pair	36-45	45-36	36-45	45-36
ACR-F (dB)	25.9	25.9	25.9	25.9
Freq. (MHz)	500.0	500.0	500.0	500.0
Limit (dB)	9.3	9.3	9.3	9.3
Worst Pair	78	78	45	36
PS ACR-F (dB)	26.3	26.4	27.1	27.4
Freq. (MHz)	1.4	1.1	500.0	500.0
Limit (dB)	57.5	59.2	6.3	6.3

N/A	MAIN	SR	MAIN	SR
Worst Pair	36-45	36-45	36-45	36-45
ACR-N (dB)	22.2	20.9	82.4	82.0
Freq. (MHz)	4.0	3.1	500.0	500.0
Limit (dB)	58.9	61.1	-23.2	-23.2
Worst Pair	36	36	36	36
PS ACR-N (dB)	24.1	23.1	85.0	84.5
Freq. (MHz)	4.0	3.4	500.0	500.0
Limit (dB)	56.4	57.9	-26.1	-26.1

N/A	MAIN	SR	MAIN	SR
Worst Pair	45	45	45	45
RL (dB)	8.6	8.8	8.6	8.8
Freq. (MHz)	465.0	500.0	465.0	500.0
Limit (dB)	6.0	6.0	6.0	6.0

Compliant Network Standards:
 10BASE-T 100BASE-TX 100BASE-T4
 1000BASE-T 2.5GBASE-T 5GBASE-T
 10GBASE-T ATM-25 ATM-51
 ATM-155 100VG-AnyLan TR-4
 TR-16 Active TR-16 Passive



Cable ID: CAT6A-SLIM-0.5M-2

Date / Time: 08/24/2019 09:17:33 PM

Headroom 15.1 dB (NEXT 36-45)

Test Limit: TIA Cat 6A Channel

Cable Type: Cat 6A U/UTP

NVP: 68.2%

Operator: KINGDATA

Software Version: V6.1 Build 3

Limits Version: V7.1

Calibration Start Date:

Main (Module): 05/11/2018

Remote (Module): 05/11/2018

Test Summary: PASS

Model: DSX-8000

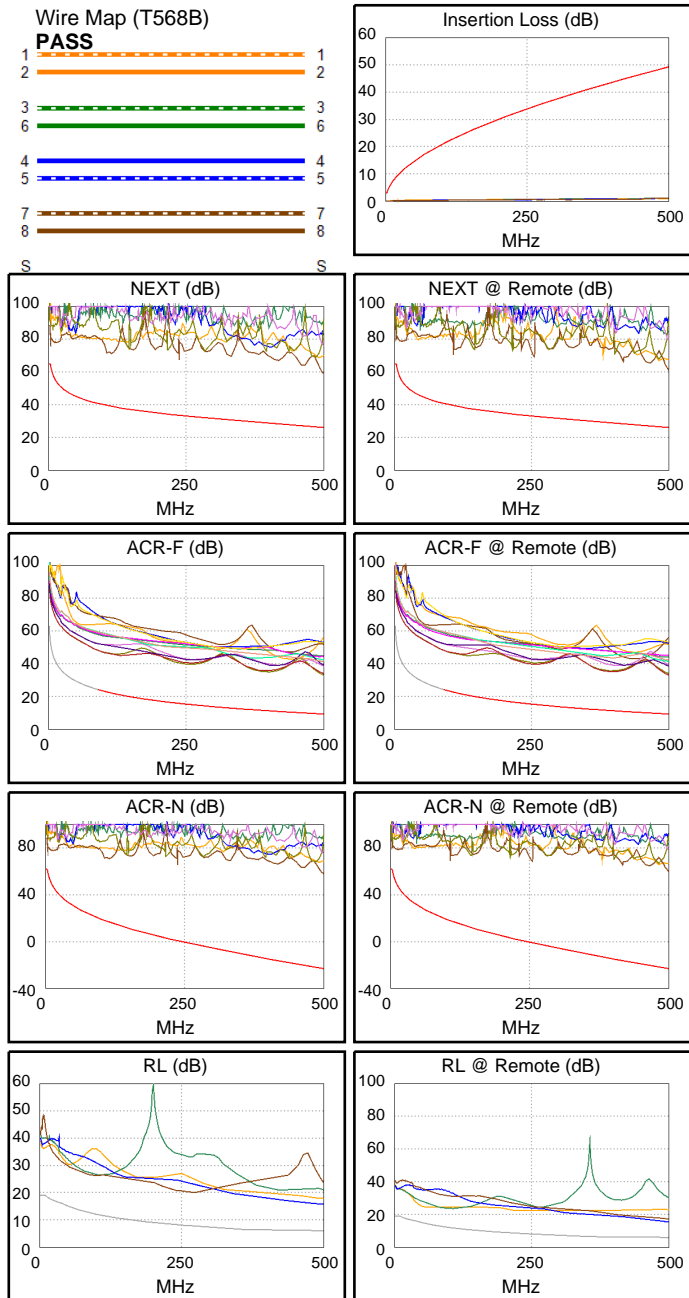
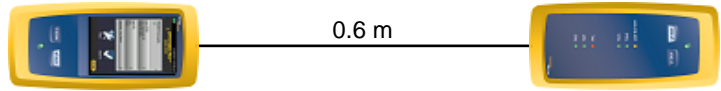
Main S/N: 1747425

Remote S/N: 1747424

Main Adapter: DSX-CHA804

Remote Adapter: DSX-CHA804

Length (m), Limit 100.0	[Pair 12]	0.6
Prop. Delay (ns), Limit 555	[Pair 36]	3
Delay Skew (ns), Limit 50	[Pair 12]	0
Resistance (ohms)	[Pair 12]	1.01
Insertion Loss Margin (dB)	[Pair 36]	47.7
Frequency (MHz)	[Pair 36]	490.0
Limit (dB)	[Pair 36]	48.8



Worst Case Margin Worst Case Value

PASS	MAIN	SR	MAIN	SR
Worst Pair	36-45	36-45	36-45	36-45
NEXT (dB)	15.1	16.4	33.0	34.6
Freq. (MHz)	3.9	2.9	500.0	500.0
Limit (dB)	63.3	65.0	26.1	26.1
Worst Pair	36	36	36	36
PS NEXT (dB)	17.1	18.2	35.6	36.7
Freq. (MHz)	3.8	3.5	500.0	500.0
Limit (dB)	61.0	61.5	23.2	23.2

PASS	MAIN	SR	MAIN	SR
Worst Pair	45-36	36-45	36-45	45-36
ACR-F (dB)	23.5	23.4	23.6	23.6
Freq. (MHz)	111.0	111.0	500.0	500.0
Limit (dB)	22.4	22.4	9.3	9.3
Worst Pair	36	36	45	36
PS ACR-F (dB)	25.1	25.4	25.8	25.5
Freq. (MHz)	100.0	393.0	500.0	500.0
Limit (dB)	20.3	8.4	6.3	6.3

N/A	MAIN	SR	MAIN	SR
Worst Pair	36-45	36-45	36-45	36-45
ACR-N (dB)	19.1	20.0	81.3	82.9
Freq. (MHz)	3.8	2.9	500.0	500.0
Limit (dB)	59.5	61.4	-23.2	-23.2
Worst Pair	36	36	36	36
PS ACR-N (dB)	21.1	22.1	83.9	85.0
Freq. (MHz)	3.8	3.5	500.0	500.0
Limit (dB)	57.0	57.6	-26.1	-26.1

N/A	MAIN	SR	MAIN	SR
Worst Pair	45	45	45	45
RL (dB)	9.7	9.4	9.7	9.4
Freq. (MHz)	500.0	500.0	500.0	500.0
Limit (dB)	6.0	6.0	6.0	6.0

Compliant Network Standards:
 10BASE-T 100BASE-TX 100BASE-T4
 1000BASE-T 2.5GBASE-T 5GBASE-T
 10GBASE-T ATM-25 ATM-51
 ATM-155 100VG-AnyLan TR-4
 TR-16 Active TR-16 Passive



Cable ID: CAT6A-SLIM-0.5M-1

Date / Time: 08/24/2019 09:16:31 PM

Headroom 15.9 dB (NEXT 36-45)

Test Limit: TIA Cat 6A Channel

Cable Type: Cat 6A U/UTP

NVP: 68.2%

Operator: KINGDATA

Software Version: V6.1 Build 3

Limits Version: V7.1

Calibration Start Date:

Main (Module): 05/11/2018

Remote (Module): 05/11/2018

Test Summary: PASS

Model: DSX-8000

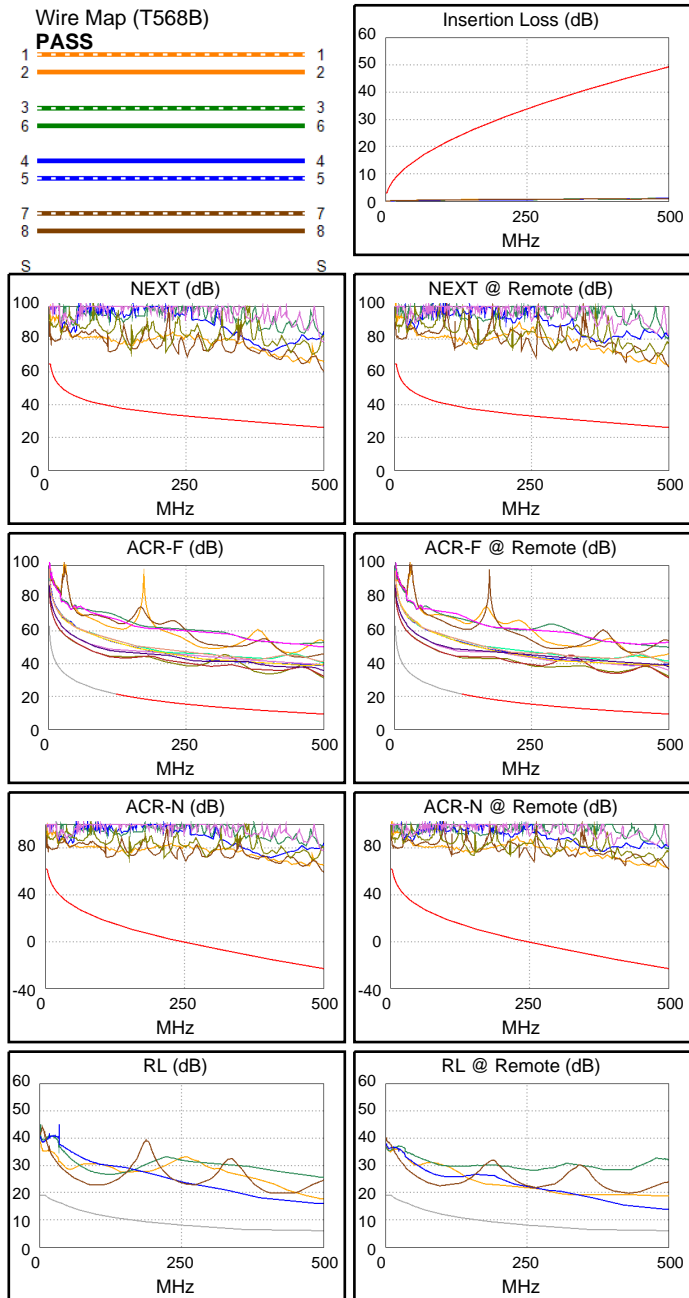
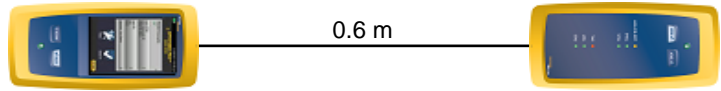
Main S/N: 1747425

Remote S/N: 1747424

Main Adapter: DSX-CHA804

Remote Adapter: DSX-CHA804

Length (m), Limit 100.0	[Pair 12]	0.6
Prop. Delay (ns), Limit 555	[Pair 12]	3
Delay Skew (ns), Limit 50	[Pair 12]	0
Resistance (ohms)	[Pair 12]	1.27
Insertion Loss Margin (dB)	[Pair 45]	48.2
Frequency (MHz)	[Pair 45]	500.0
Limit (dB)	[Pair 45]	49.3



Worst Case Margin Worst Case Value

PASS	MAIN	SR	MAIN	SR
Worst Pair	36-45	36-45	36-45	36-45
NEXT (dB)	15.9	17.0	34.5	37.0
Freq. (MHz)	4.6	3.1	500.0	500.0
Limit (dB)	62.0	64.8	26.1	26.1
Worst Pair	36	36	36	36
PS NEXT (dB)	17.9	19.0	36.5	37.3
Freq. (MHz)	4.6	3.1	500.0	500.0
Limit (dB)	59.5	62.0	23.2	23.2

PASS	MAIN	SR	MAIN	SR
Worst Pair	45-36	36-45	36-45	45-36
ACR-F (dB)	21.8	21.8	22.0	22.1
Freq. (MHz)	109.5	109.5	500.0	500.0
Limit (dB)	22.5	22.5	9.3	9.3
Worst Pair	36	36	36	36
PS ACR-F (dB)	23.2	23.2	24.5	24.2
Freq. (MHz)	1.0	1.0	500.0	500.0
Limit (dB)	60.3	60.3	6.3	6.3

N/A	MAIN	SR	MAIN	SR
Worst Pair	36-45	36-45	36-45	36-45
ACR-N (dB)	20.3	20.5	82.7	85.2
Freq. (MHz)	4.6	2.8	500.0	500.0
Limit (dB)	57.6	61.5	-23.2	-23.2
Worst Pair	36	36	36	36
PS ACR-N (dB)	22.3	22.7	84.8	85.6
Freq. (MHz)	4.6	3.1	500.0	500.0
Limit (dB)	55.1	58.3	-26.1	-26.1

N/A	MAIN	SR	MAIN	SR
Worst Pair	45	45	45	45
RL (dB)	9.9	7.8	9.9	7.8
Freq. (MHz)	491.0	500.0	491.0	500.0
Limit (dB)	6.0	6.0	6.0	6.0

Compliant Network Standards:
 10BASE-T 100BASE-TX 100BASE-T4
 1000BASE-T 2.5GBASE-T 5GBASE-T
 10GBASE-T ATM-25 ATM-51
 ATM-155 100VG-AnyLan TR-4
 TR-16 Active TR-16 Passive