

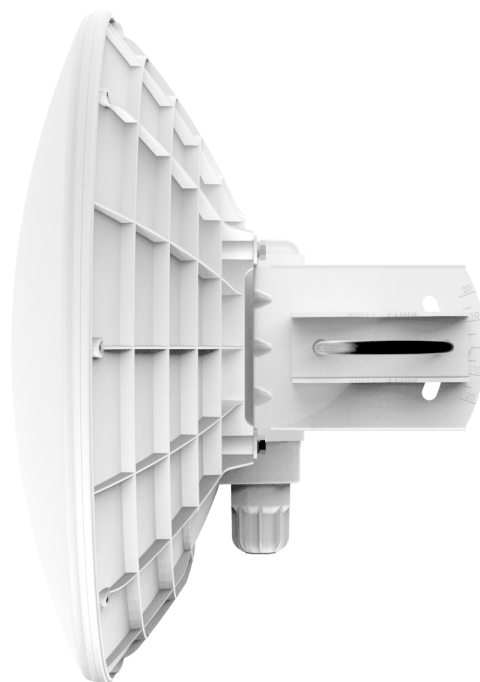
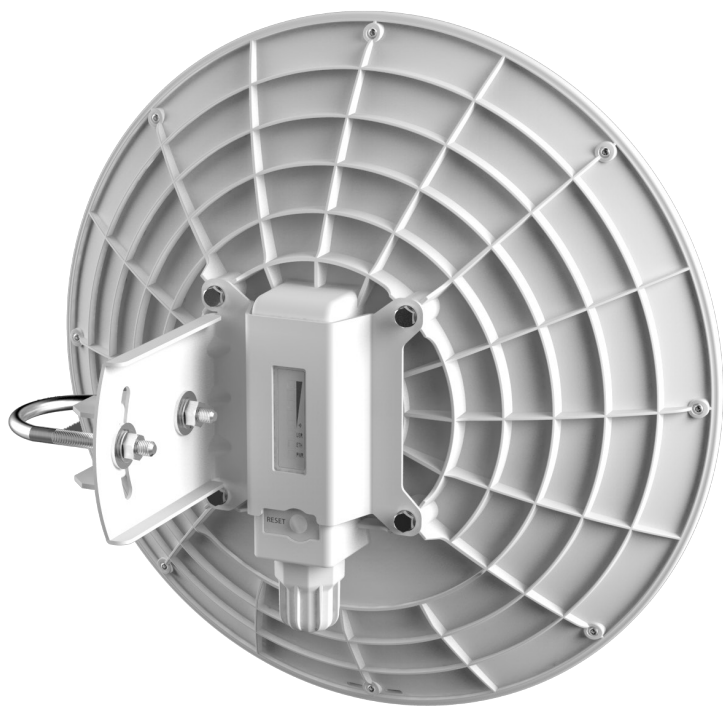
DynaDish 5

The DynaDish 5 is a new 802.11ac outdoor device with an integrated antenna. Compact in its design, it is a simple and completely integrated product with everything you need to quickly install a reliable point to point link.

The DynaDish 5 is powered by a new 720MHz CPU from Qualcomm.

New 802.11ac outdoor device

- ideal for long distance point-to-point links
- 5GHz dual chain board integrated into 25dBi dish antenna with 8 degree beam width
- 720Mhz CPU 300MHz DDR2
- one Gigabit Ethernet port



The antenna is a 8 degree 25dBi dish, and it includes a precise alignment mount, ideal for long range point to point wireless links.

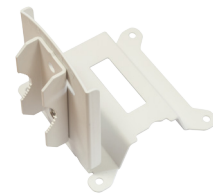
Specifications

| | |
|----------------------------|---|
| Product code | RBDynaDishG-5HacD |
| CPU nominal frequency | 720 MHz |
| CPU core count | 1 |
| Size of RAM | 128 MB |
| 10/100/1000 Ethernet ports | 1 |
| Wireless | Built-in 5 GHz 802.11ac, dual-chain |
| Antenna gain | 25dBi |
| Antenna beam width | 8° |
| Wireless chip model | QCA9882-BR4A-R |
| PoE in | Yes |
| Supported input voltage | 11V - 60V passive PoE or 802.3af/at with unshielded cable |
| Voltage Monitor | Yes |
| PCB temperature monitor | Yes |
| CPU temperature monitor | No |
| Dimensions | Ø 404mm, height 175mm (without mount) |
| License level | 3 |
| Operating System | RouterOS |
| CPU | QCA9557-AT4A-R |
| Max Power consumption | 16W |
| Suggested price | \$179 |

Included



24V 0.8A Power adapter



Precision mount



U Kit

Wireless specifications

| RATE | Tx (dBm) | Rx (dBm) |
|----------|----------|----------|
| 6MBit/s | 31 | -96 |
| 54MBit/s | 28 | -81 |
| MCS0 | 30 | -96 |
| MCS7 | 27 | -77 |
| MCS9 | 22 | -72 |



Gigabit PoE injector